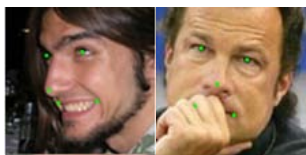


# Deep Learning in Object Detection, Segmentation, and Recognition

Xiaogang Wang

Department of Electronic Engineering,  
The Chinese University of Hong Kong



Face alignment



Face parsing



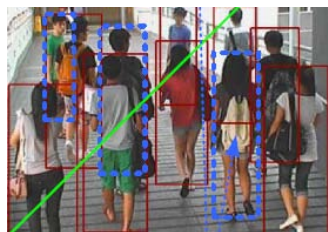
Face recognition



Attribute recognition



Human pose estimation



Pedestrian detection



Person re-identification  
across camera views



Deep learning



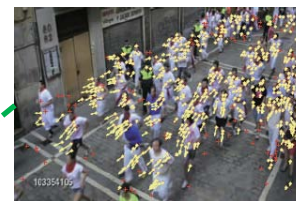
Crowd video surveillance



Pedestrian parsing



Crowd segmentation



Crowd tracking

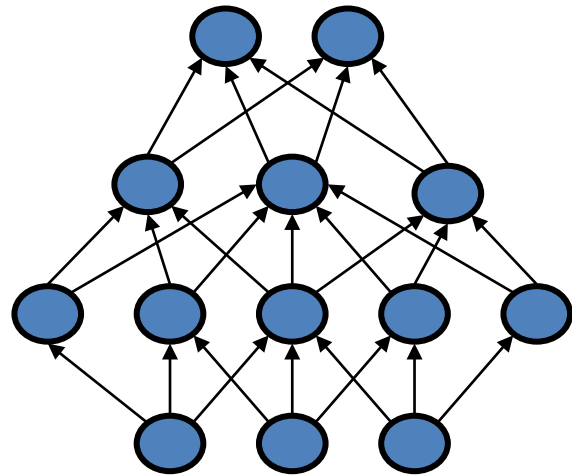


Crowd behaviour analysis

Neural network  
Back propagation



1986

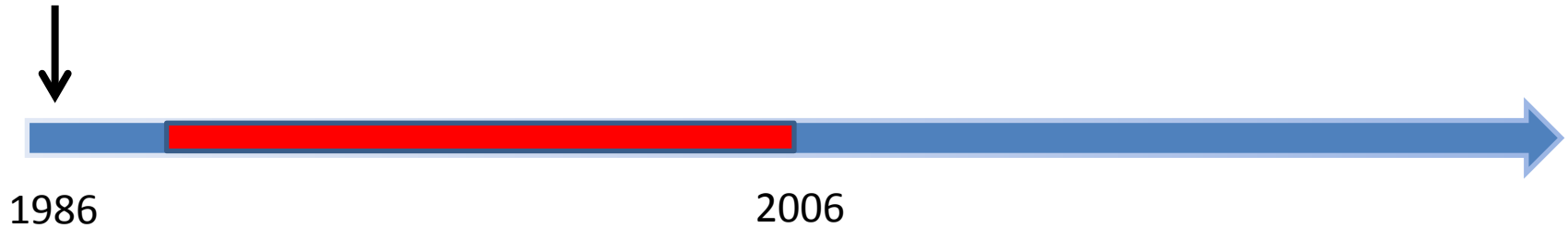


- Solve general learning problems
- Tied with biological system

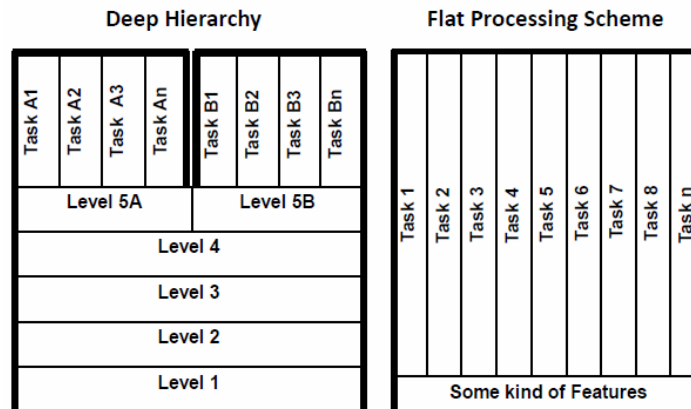
But it is given up...

- Hard to train
- Insufficient computational resources
- Small training sets
- Does not work well

Neural network  
Back propagation



- SVM
- Boosting
- Decision tree
- KNN
- ...
- Loose tie with biological systems
- Flat structures
- Specific methods for specific tasks
  - Hand crafted features (GMM-HMM, SIFT, LBP, HOG)



Kruger et al. TPAMI'13

Neural network  
Back propagation



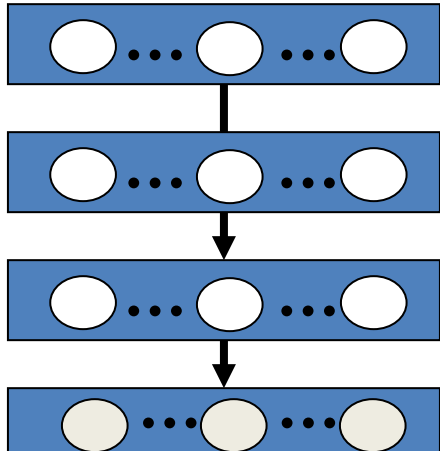
1986



Deep belief net  
*Science*



2006



- Unsupervised & Layer-wised pre-training
- Better designs for modeling and training (normalization, nonlinearity, dropout)
- Feature learning
- New development of computer architectures
  - GPU
  - Multi-core computer systems
- Large scale databases

Neural network  
Back propagation



Deep belief net  
*Science*



Speech



1986

2006

2011

deep learning results

task	hours of training data	DNN-HMM	GMM-HMM with same data
Switchboard (test set 1)	309	18.5	27.4
Switchboard (test set 2)	309	16.1	23.6
English Broadcast News	50	17.5	18.8
Bing Voice Search (Sentence error rates)	24	30.4	36.2
Google Voice Input	5,870	12.3	
Youtube	1,400	47.6	52.3

## Deep Networks Advance State of Art in Speech

Deep Learning leads to breakthrough in speech recognition at MSR.



Neural network  
Back propagation



Deep belief net  
*Science*



Speech



The New York Times  
Google  
Hong Kong




1986

2006

2011

2012



Trained on:  
10,000,000 YouTube videos  
1 frame from each (200x200)



How Many Computers to Identify a Cat? **16000 CPU cores**

Neural network  
Back propagation



Deep belief net  
*Science*



Speech



The New York Times  
Google  
Hong Kong

IMAGENET



1986

2006

2011

2012

Rank	Name	Error rate	Description
1	<b>U. Toronto</b>	0.15315	Deep learning
2	U. Tokyo	0.26172	Hand-crafted features and learning models. Bottleneck.
3	U. Oxford	0.26979	
4	Xerox/INRIA	0.27058	

Object recognition over 1,000,000 images and 1,000 categories  
(2 GPU)



Neural network  
Back propagation



Deep belief net  
*Science*



Speech



The New York Times  
Google  
Hong Kong

IMAGENET



1986

2006

2011

2012

- ImageNet 2013

Rank	Name	Error rate	Description
1	NYU	0.11197	Deep learning
2	NUS	0.12535	Deep learning
3	Oxford	0.13555	Deep learning

MSRA, IBM, Adobe, NEC, Clarifai, Berkley, U. Tokyo, UCLA, UIUC, Toronto ....

Top 20 groups all used deep learning

Neural network  
Back propagation



1986



Deep belief net  
*Science*



2006



Speech



2011

The New York Times  
Google  
Hong Kong

IMAGENET



2012



- Google and Baidu announced their deep learning based visual search engines (2013)
  - [Google](#)
  - [Baidu](#)

# Works Done by Us

## Detection

- Pedestrian detection
- Facial keypoint detection

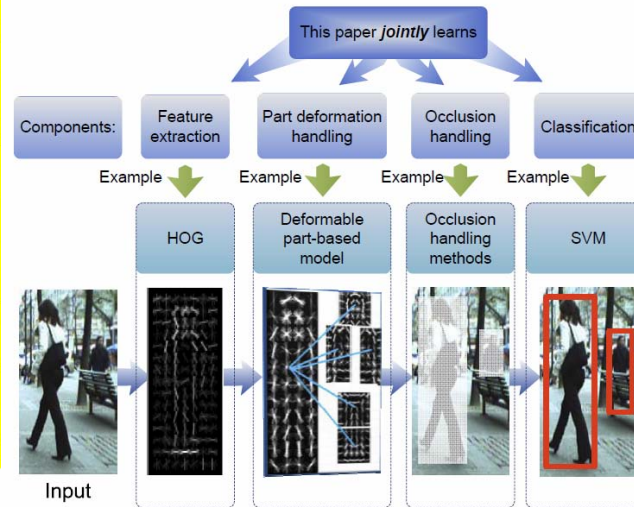
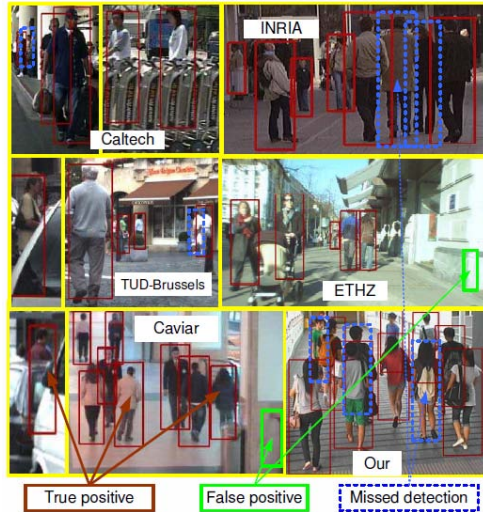
## Segmentation

- Face parsing
- Pedestrian parsing

## Recognition

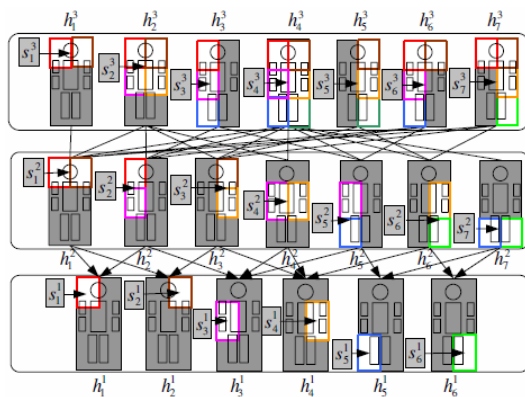
- Face verification
- Face attribute  
recognition

# Pedestrian Detection

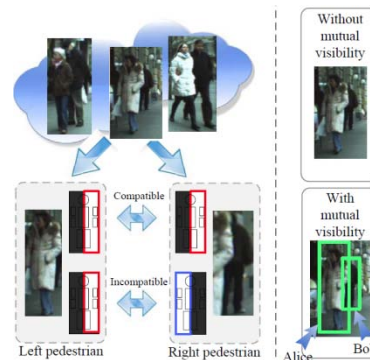


ICCV'13

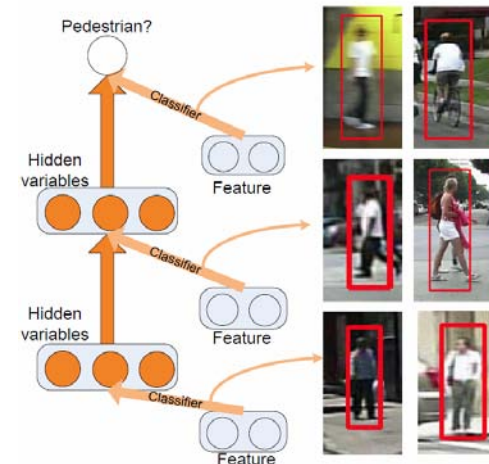
Improve state-of-the-art  
average miss detection rate  
on the largest Caltech dataset  
from **63%** to **39%**



CVPR'12



CVPR'13



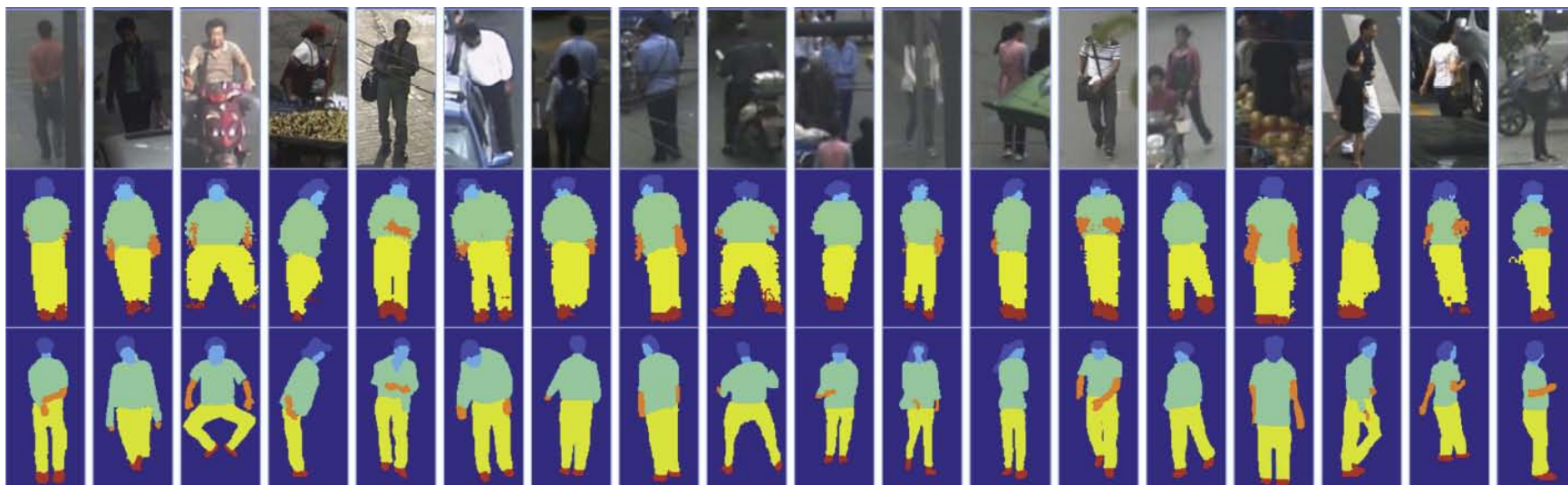
ICCV'13



Facial keypoint detection, CVPR'13  
(2% average error on LFPW)



Face parsing, CVPR'12

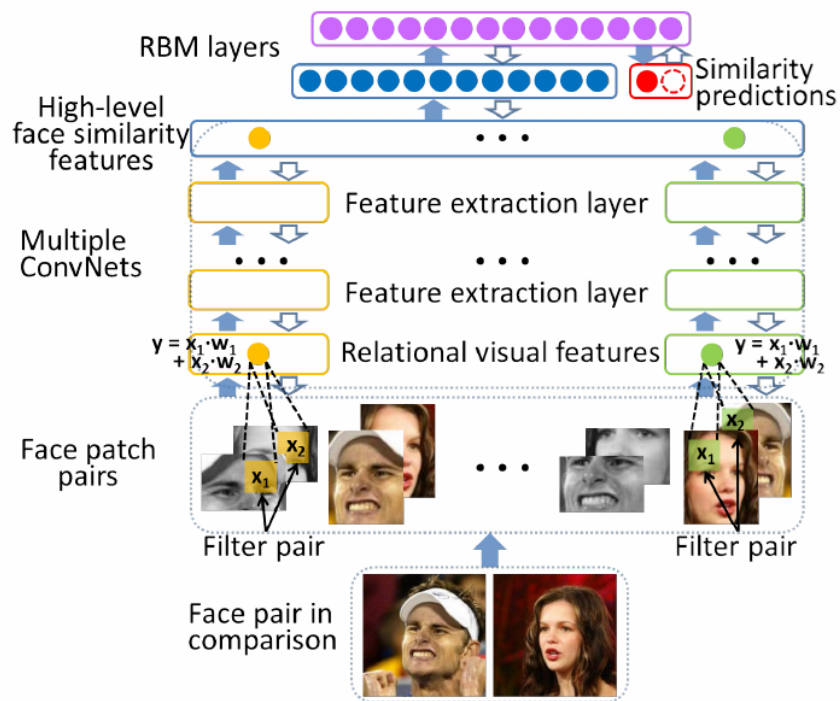


Pedestrian parsing, CVPR'12

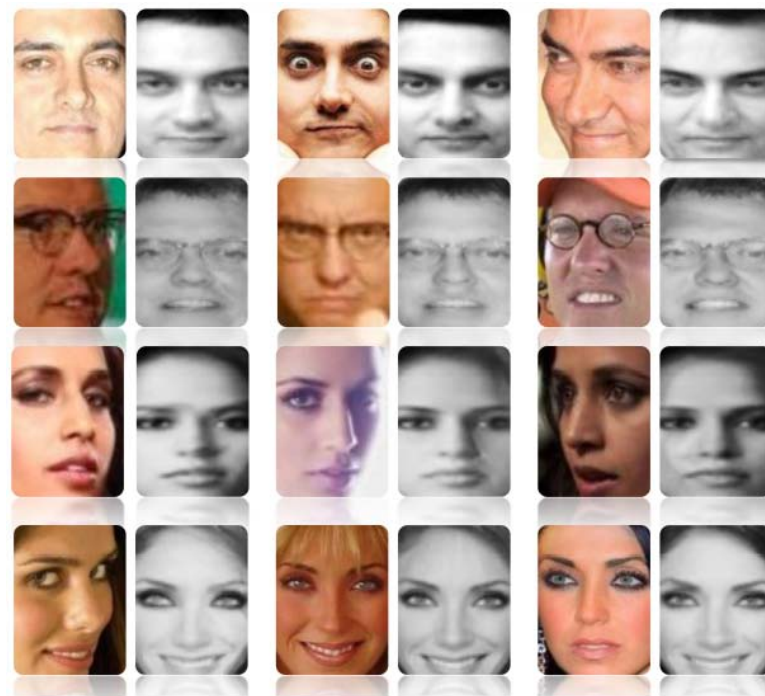


# Face Recognition and Face Attribute Recognition

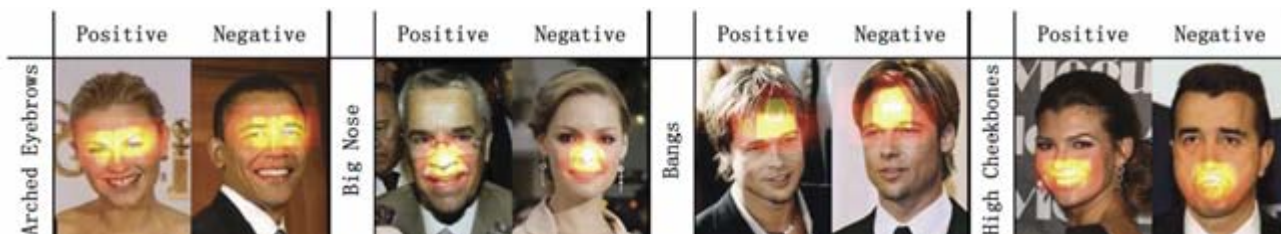
(LFW: 96.45%)



Face verification, ICCV'13



Recovering Canonical-View Face Images, ICCV'13



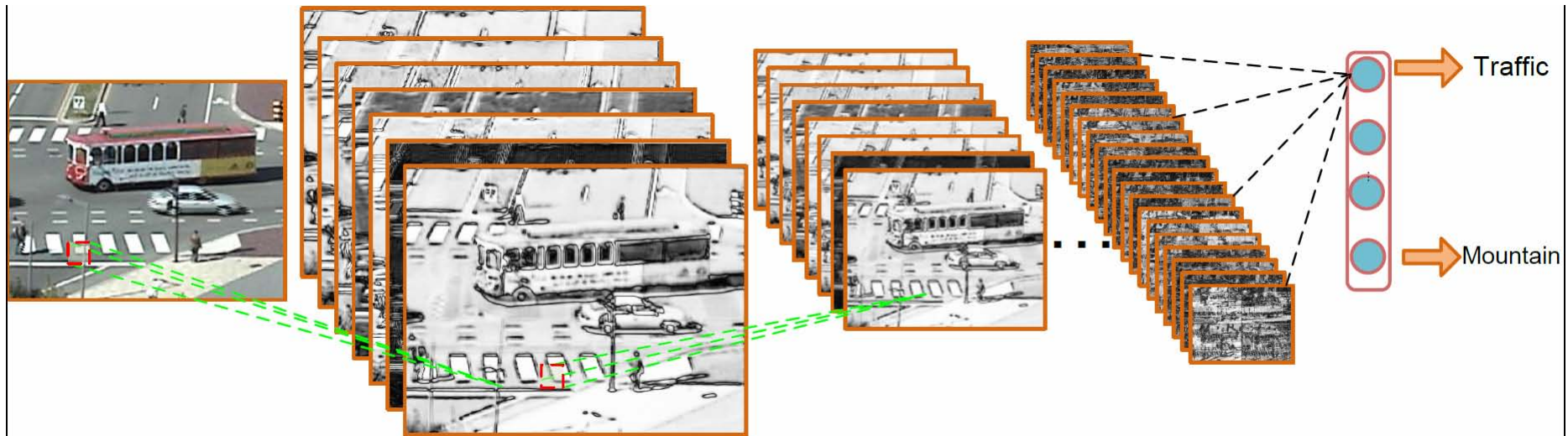
Face attribute recognition, ICCV'13

# Introduction on Classical Deep Models

- Convolutional Neural Networks (CNN)
- Deep Belief Net (DBN)
- Auto-encoder

# Classical Deep Models

- Convolutional Neural Networks (CNN)
  - LeCun'95



Convolution

Pooling



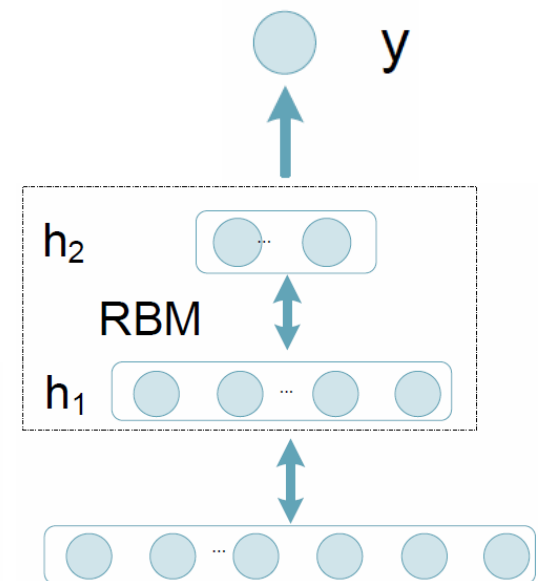
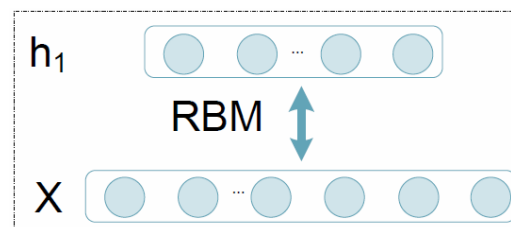
# Classical Deep Models

- Deep belief net
  - Hinton'06

$$P(\mathbf{x}, \mathbf{h}_1, \mathbf{h}_2) = p(\mathbf{x} | \mathbf{h}_1) p(\mathbf{h}_1, \mathbf{h}_2)$$

$$P(\mathbf{x}, \mathbf{h}_1) = \frac{e^{-E(\mathbf{x}, \mathbf{h}_1)}}{\sum_{\mathbf{x}, \mathbf{h}_1} e^{-E(\mathbf{x}, \mathbf{h}_1)}}$$

$$E(\mathbf{x}, \mathbf{h}_1) = \mathbf{b}' \mathbf{x} + \mathbf{c}' \mathbf{h}_1 + \mathbf{h}_1' \mathbf{W} \mathbf{x}$$

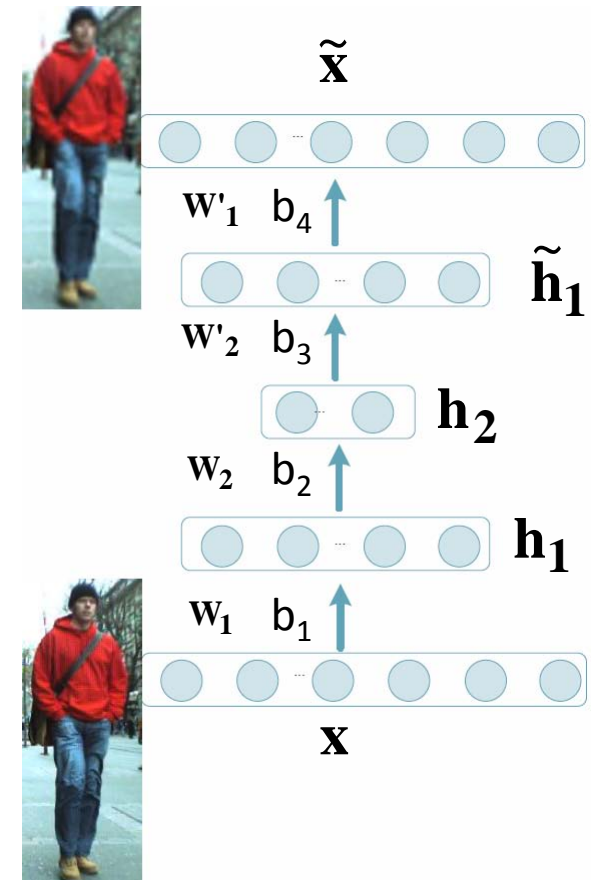


# Classical Deep Models

- Auto-encoder
  - Hinton'06

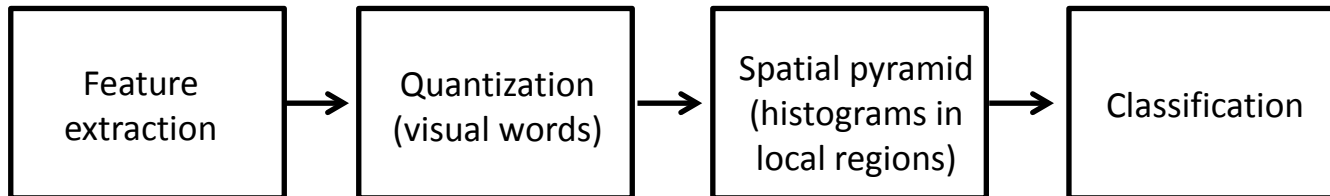
Encoding:  $\mathbf{h}_1 = \sigma(\mathbf{W}_1 \mathbf{x} + b_1)$   
 $\mathbf{h}_2 = \sigma(\mathbf{W}_2 \mathbf{h}_1 + b_2)$

Decoding:  $\tilde{\mathbf{h}}_1 = \sigma(\mathbf{W}'_2 \mathbf{h}_2 + b_3)$   
 $\tilde{\mathbf{x}} = \sigma(\mathbf{W}'_1 \tilde{\mathbf{h}}_1 + b_4)$

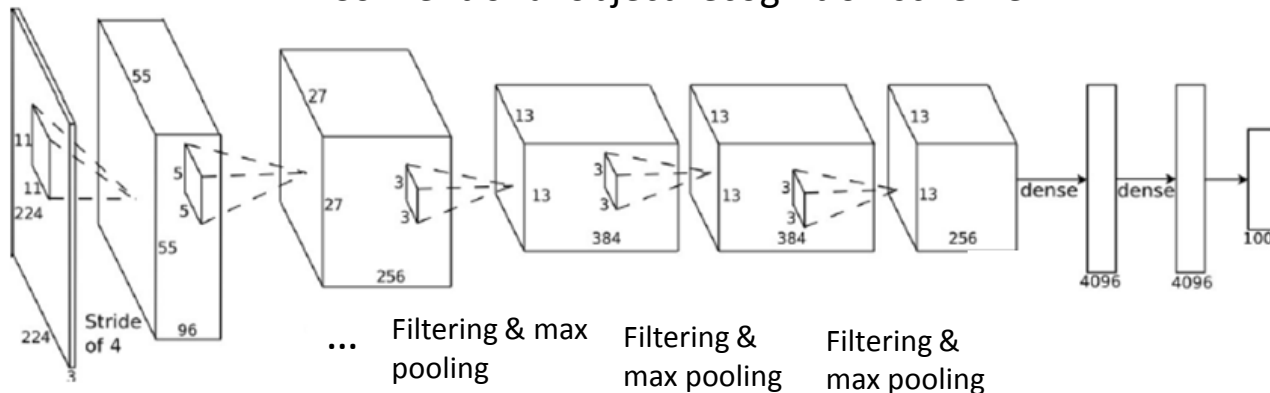


# Opinion I

- How to formulate a vision problem with deep learning?
  - Make use of experience and insights obtained in CV research
  - Sequential design/learning vs **joint learning**
  - Effectively train a deep model (layerwise pre-training + fine tuning)



Conventional object recognition scheme



Feature extraction  $\leftrightarrow$  filtering

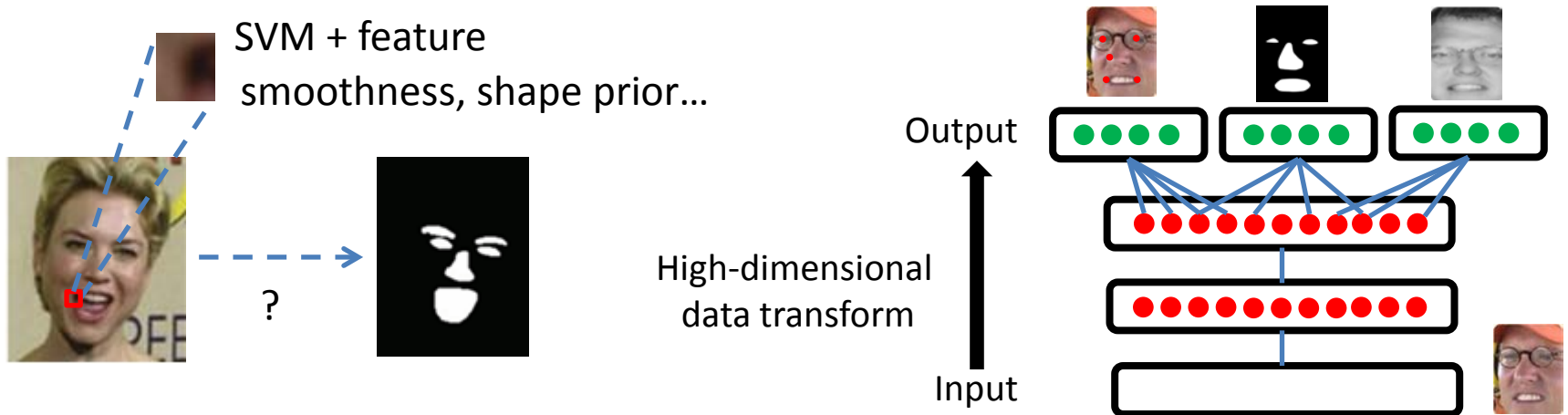
Quantization  $\leftrightarrow$  filtering

Spatial pyramid  $\leftrightarrow$  multi-level pooling

Krizhevsky  
NIPS'12

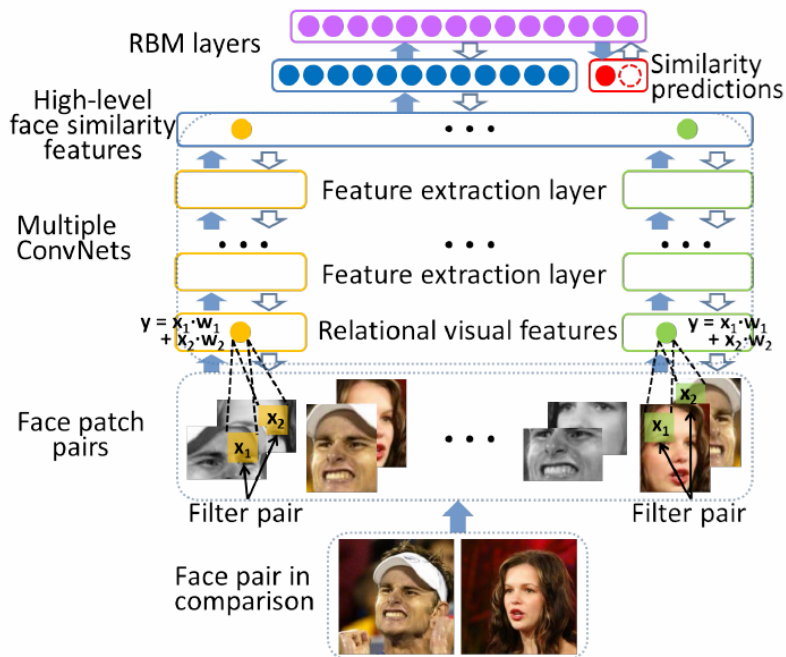
# Opinion II

- How to make use of the large learning capacity of deep models?
  - **High dimensional data transform**
  - Hierarchical nonlinear representations



# Opinion III

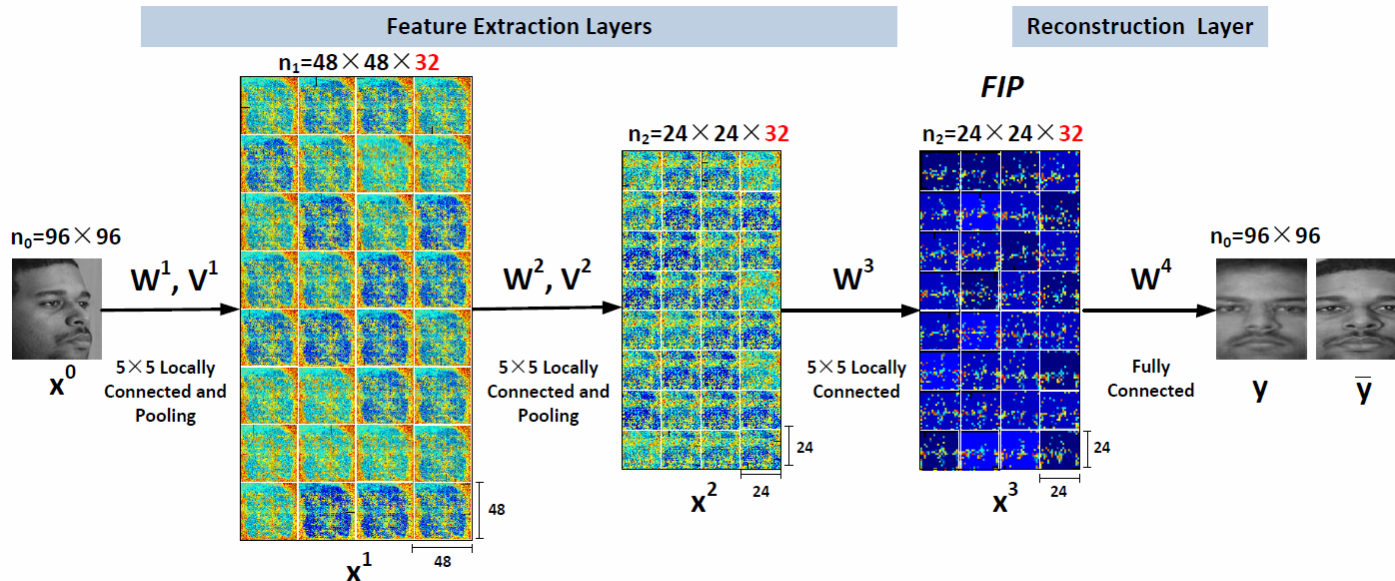
- Deep learning likes challenging tasks (for better generalization)
  - Make input data more challenging (augmenting data by translating, rotating, and scaling)
  - Make training process more challenging (dropout: randomly setting some responses to zero; dropconnect: randomly setting some weights to zero)
  - **Make prediction more challenging**



Y. Sun, X. Wang, and X. Tang, "Hybrid Deep Learning for Computing Face Similarities," ICCV'13

Learning feature through face verification (predicting 0/1 label): 92.57% on LFW with 480 CNNs

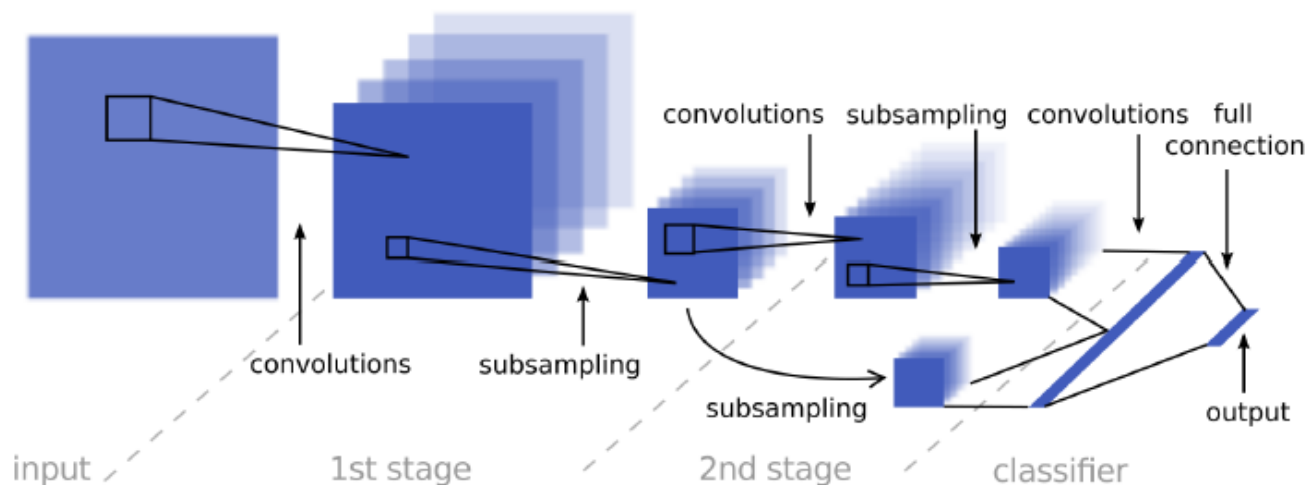
Learning feature through face reconstruction (predicting 9216 pixels): 96.45% on LFW with 4 CNNs



Z. Zhu, P. Luo, X. Wang, and X. Tang, "Deep Learning Indentify-Preserving Face Space," ICCV 2013.

# **Joint Deep Learning**

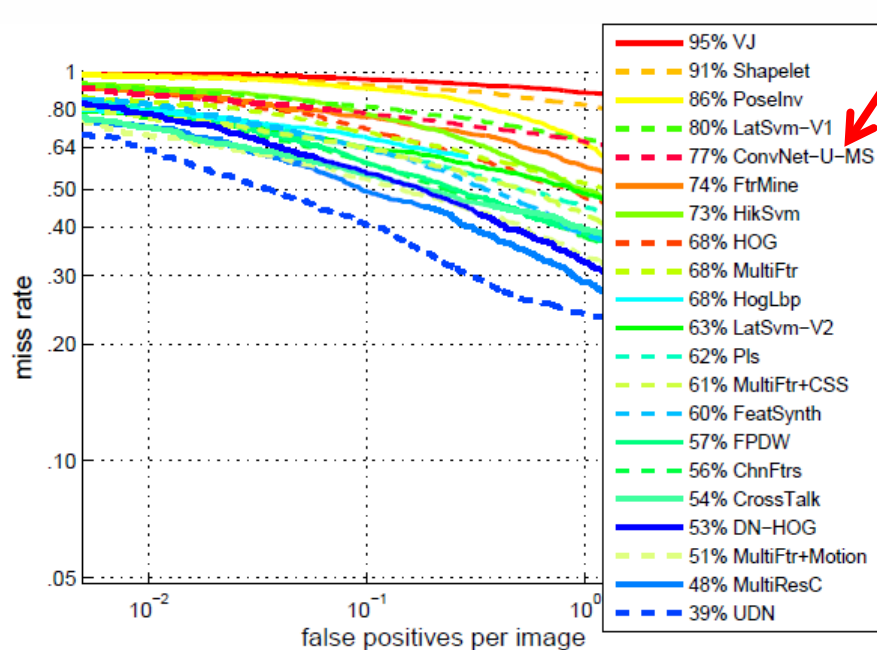
# What if we treat an existing deep model as a black box in pedestrian detection?



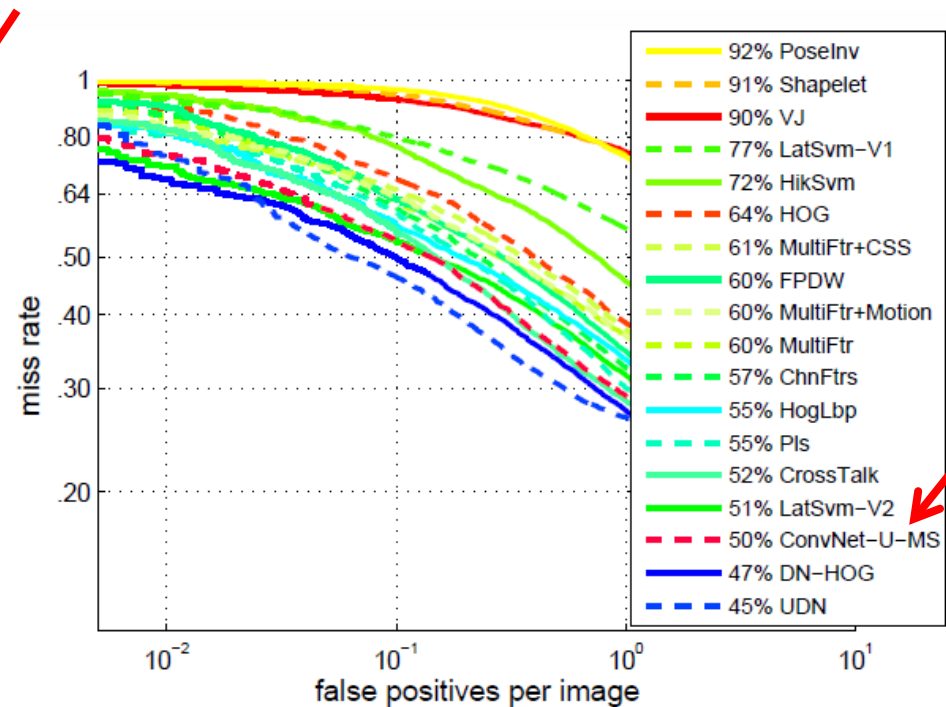
## ConvNet-U-MS

- Sermnet, K. Kavukcuoglu, S. Chintala, and LeCun, “Pedestrian Detection with Unsupervised Multi-Stage Feature Learning,” CVPR 2013.

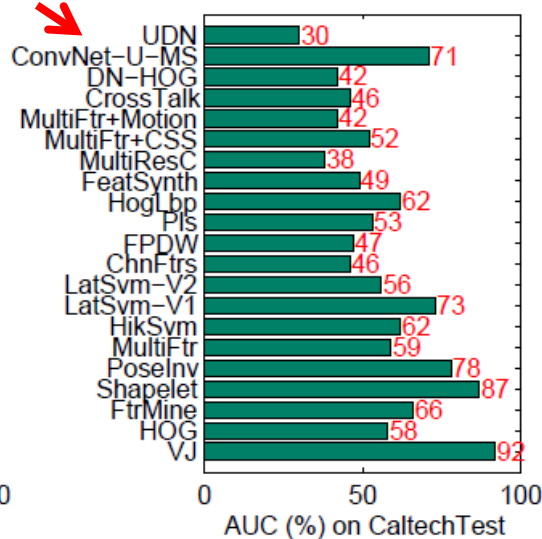
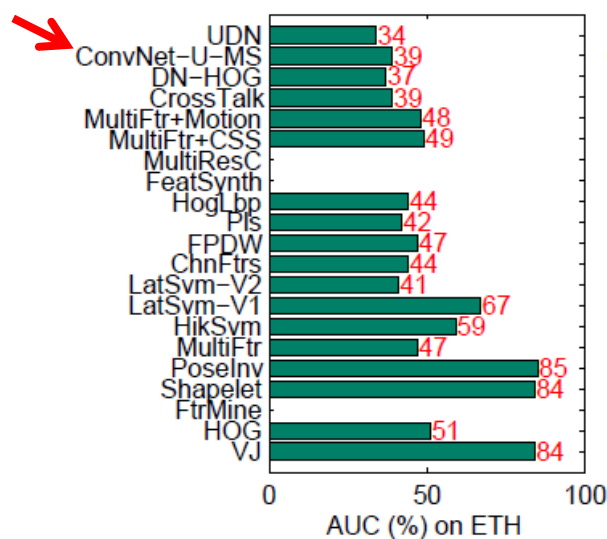


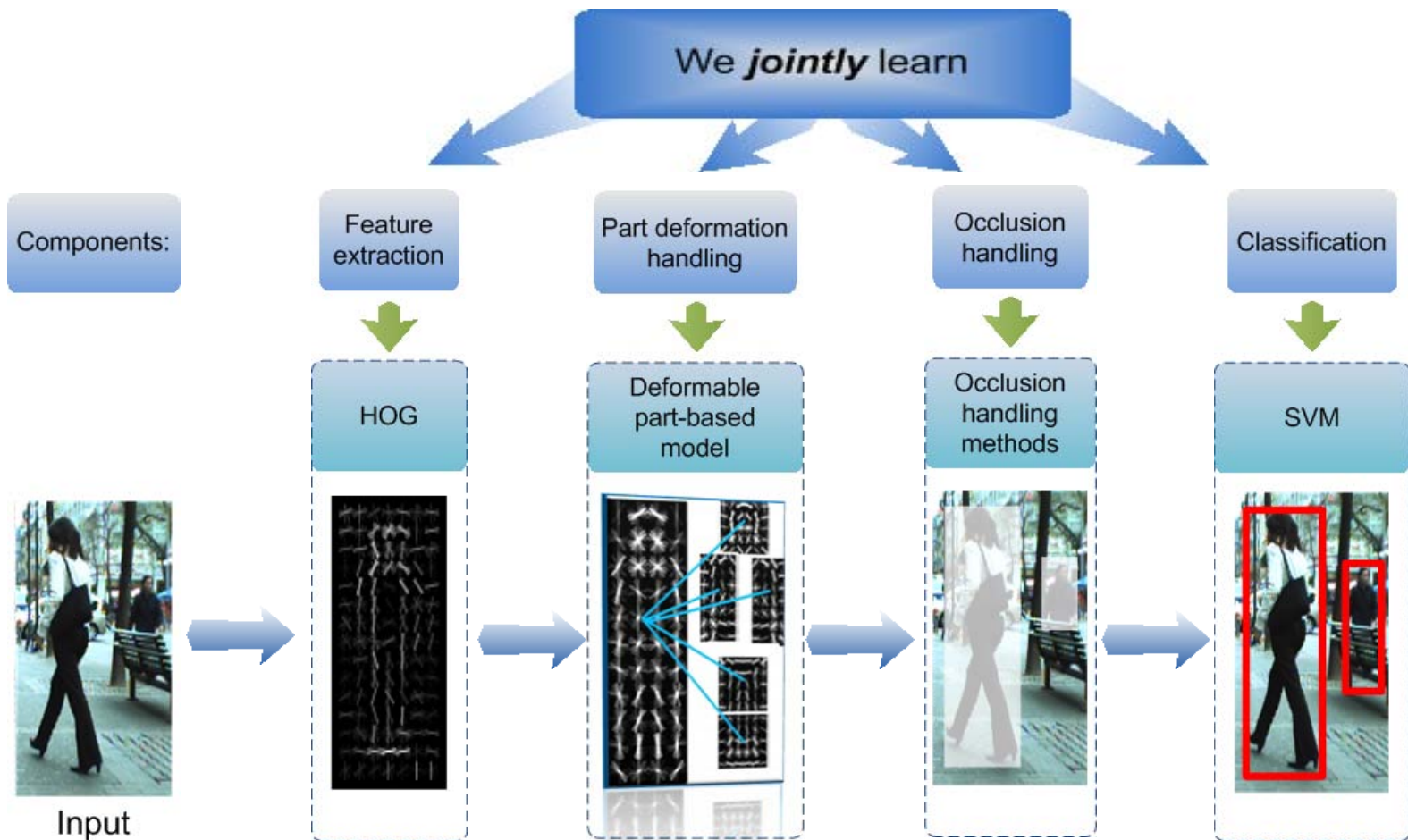


Results on Caltech Test



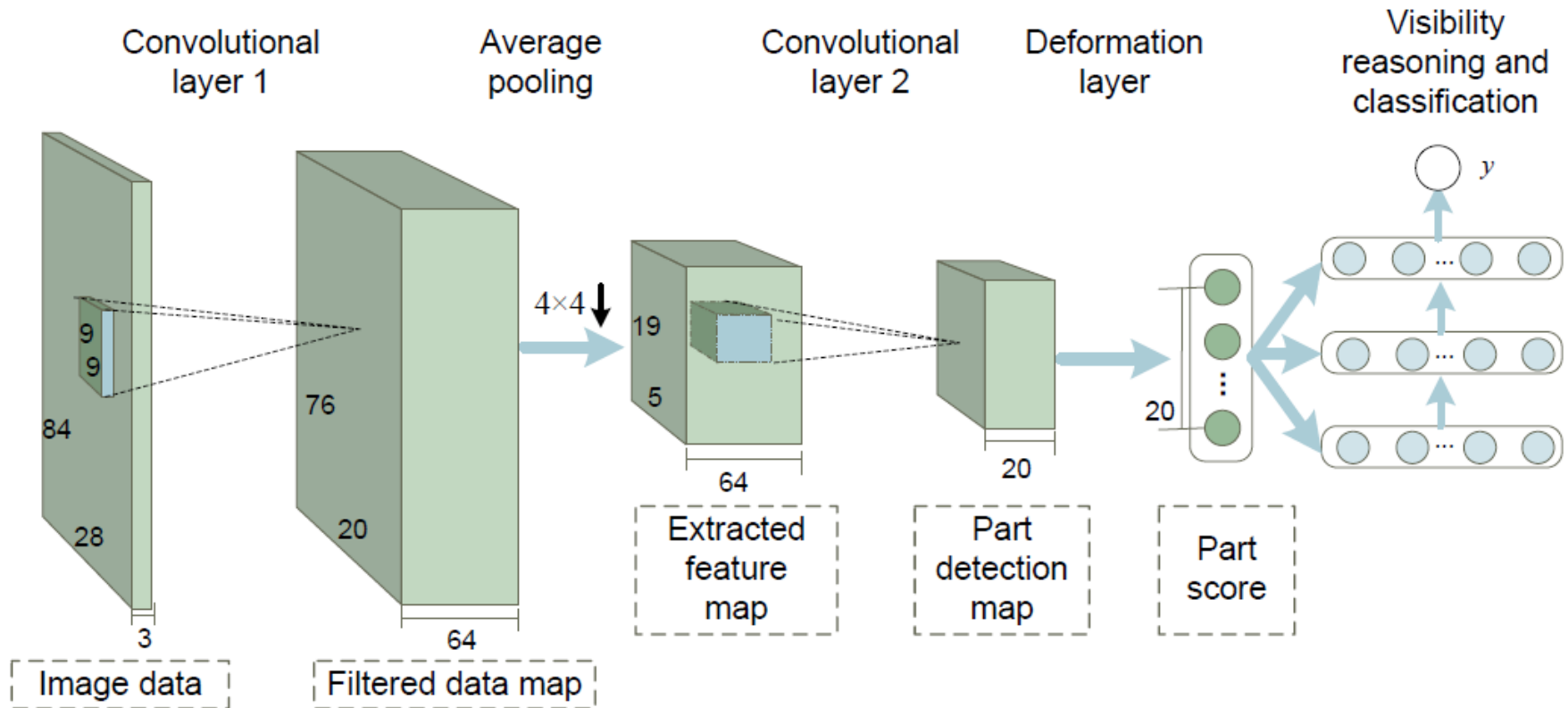
Results on ETHZ





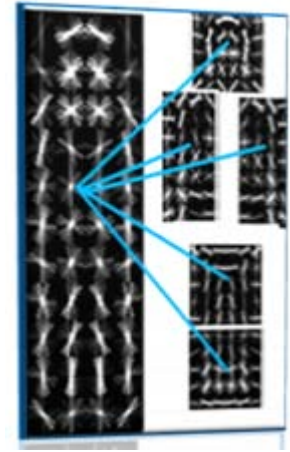
- N. Dalal and B. Triggs. Histograms of oriented gradients for human detection. CVPR, 2005. (6000 citations)
- P. Felzenszwalb, D. McAlester, and D. Ramanan. A Discriminatively Trained, Multiscale, Deformable Part Model. CVPR, 2008. (2000 citations)
- W. Ouyang and X. Wang. A Discriminative Deep Model for Pedestrian Detection with Occlusion Handling. CVPR, 2012.

# Our Joint Deep Learning Model

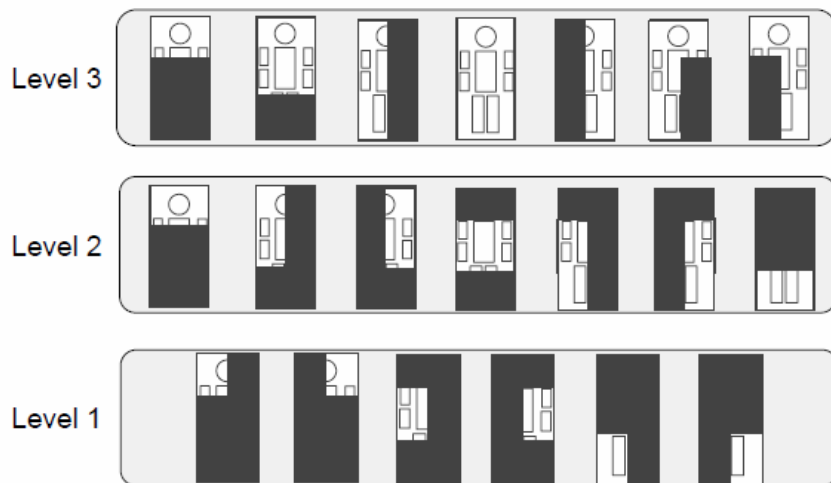


# Modeling Part Detectors

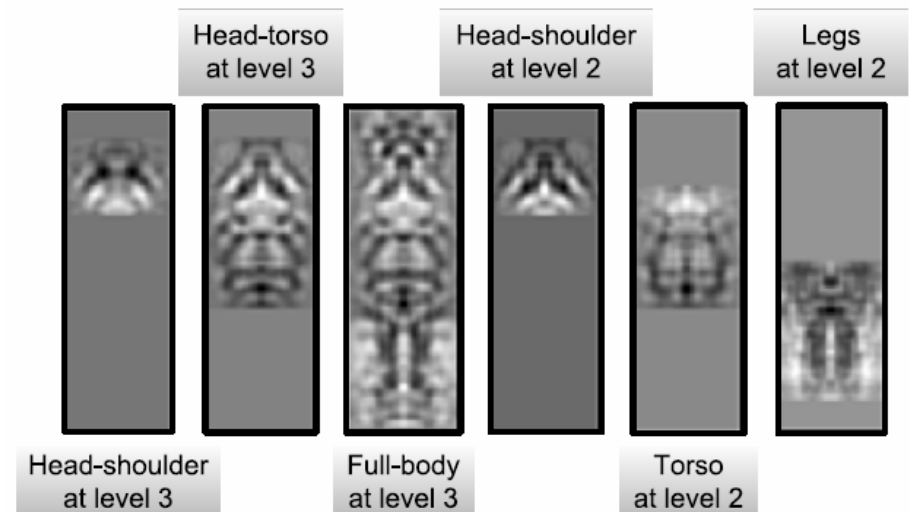
- Design the filters in the second convolutional layer with variable sizes



Part models learned from HOG

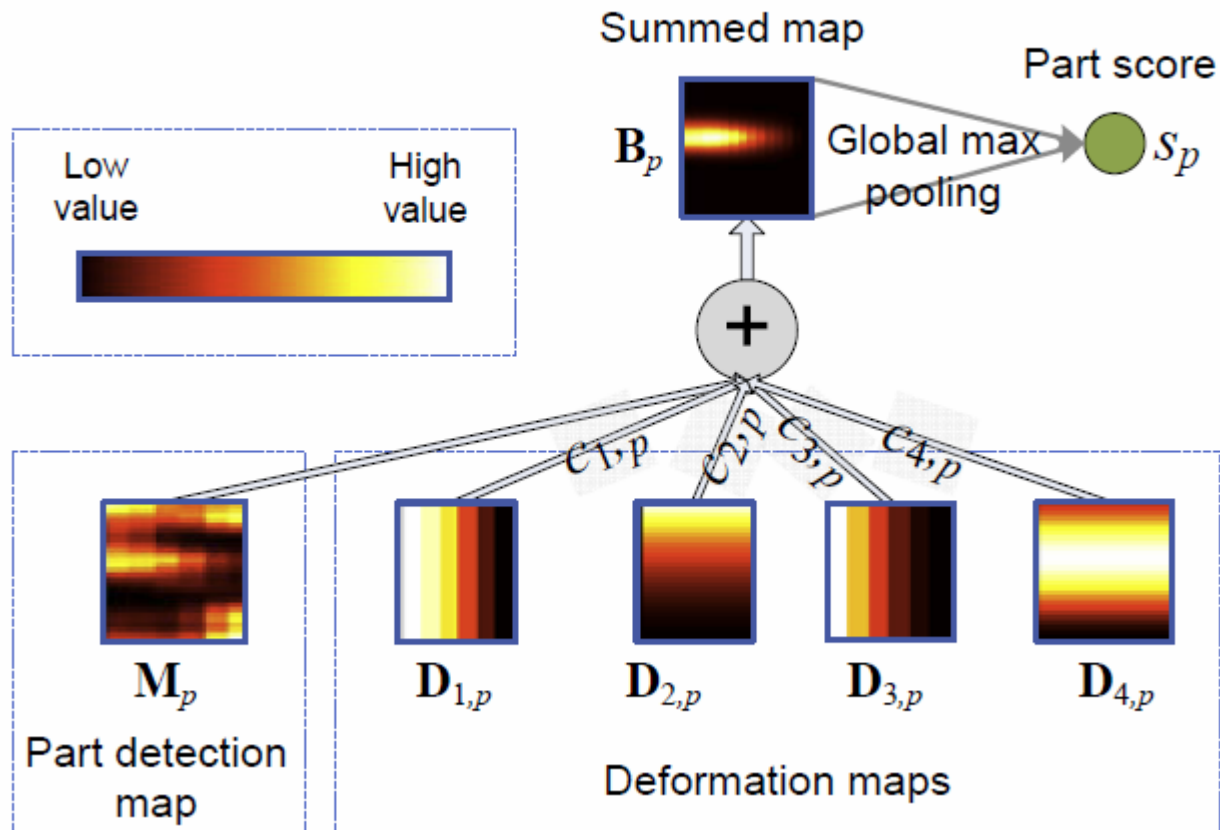


Part models

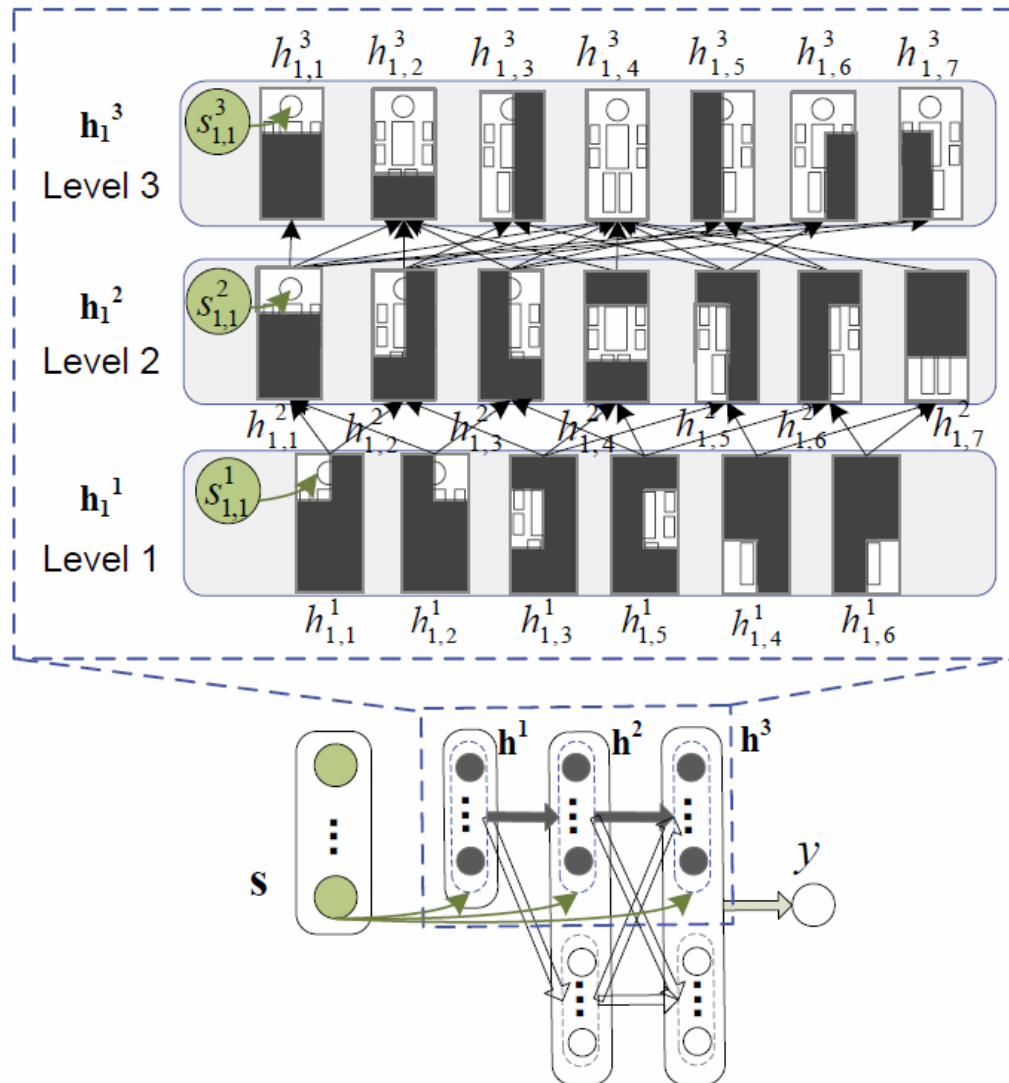


Learned filtered at the second convolutional layer

# Deformation Layer

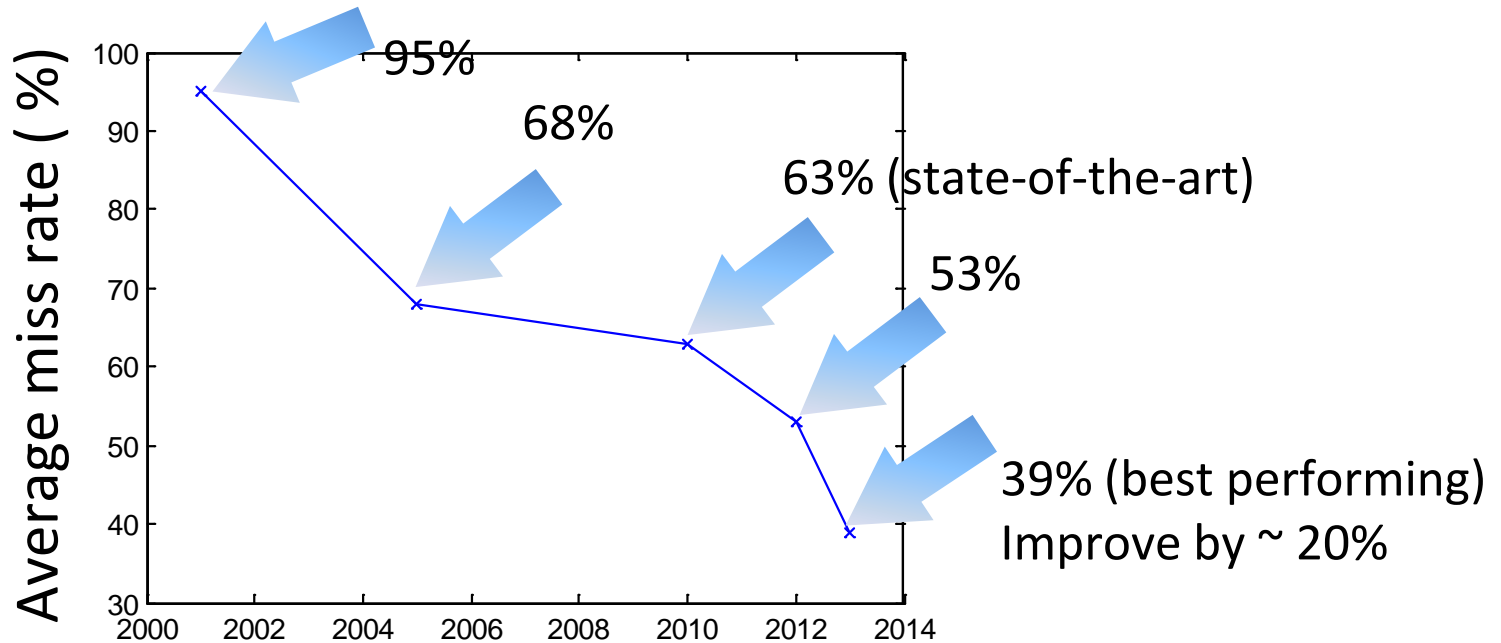


# Visibility Reasoning with Deep Belief Net



# Experimental Results

- Caltech – Test dataset (largest, most widely used)



W. Ouyang and X. Wang, "A Discriminative Deep Model for Pedestrian Detection with Occlusion Handling," CVPR 2012.

W. Ouyang, X. Zeng and X. Wang, "Modeling Mutual Visibility Relationship in Pedestrian Detection," CVPR 2013.

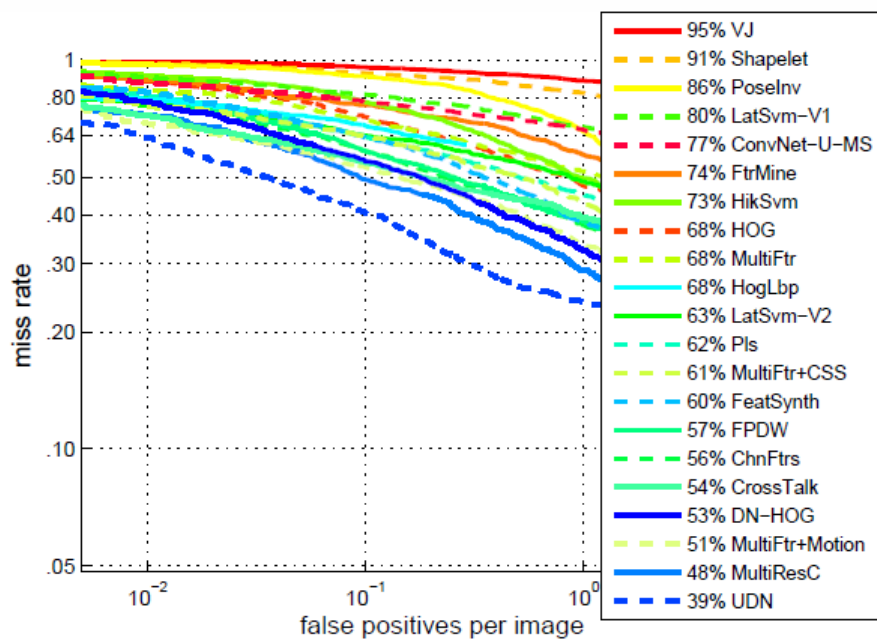
W. Ouyang, Xiaogang Wang, "Single-Pedestrian Detection aided by Multi-pedestrian Detection," CVPR 2013.

X. Zeng, W. Ouyang and X. Wang, "A Cascaded Deep Learning Architecture for Pedestrian Detection," ICCV 2013.

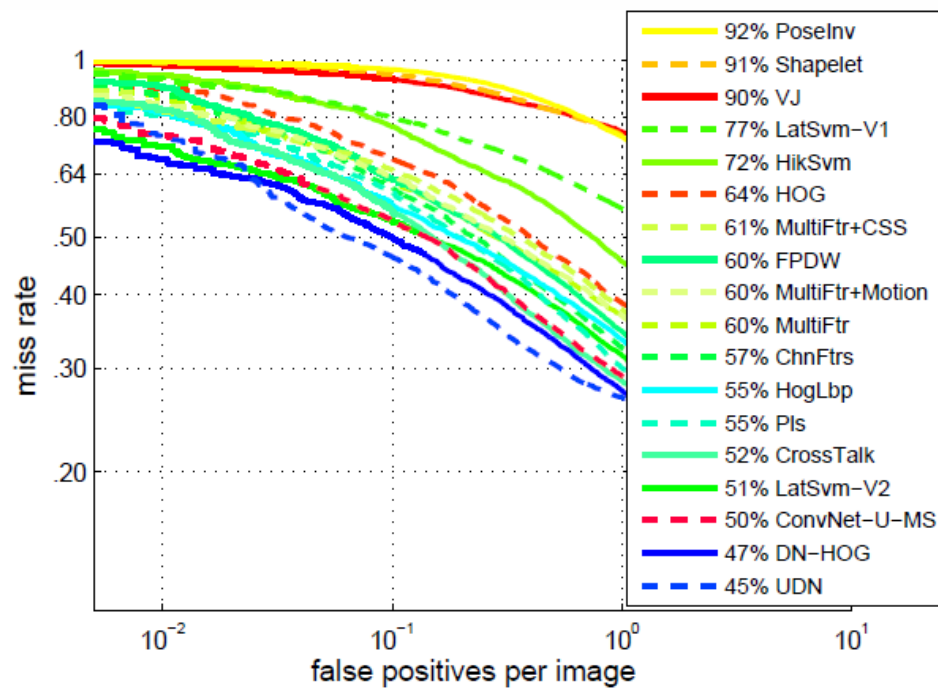
W. Ouyang and Xiaogang Wang, "Joint Deep Learning for Pedestrian Detection," IEEE ICCV 2013.

**Rapid object detection using a boosted cascade of simple features**  
[CVPR 2004](#), [arXiv:0401262](#), [IEEE Transactions on Pattern Recognition and Analysis, 2004](#), [CVPR 2004](#), [IEEE](#), [IEEE Xplore](#), [IEEE.org.org](#)  
 Abstract: This paper describes a machine-learning approach for visual object detection which is capable of processing images extremely rapidly and achieving high detection rates. This work is distinguished by three key contributions. The first is the introduction of a new ...  
 Cited by 7647 Related articles All 201 versions Import into BibTeX More ▾



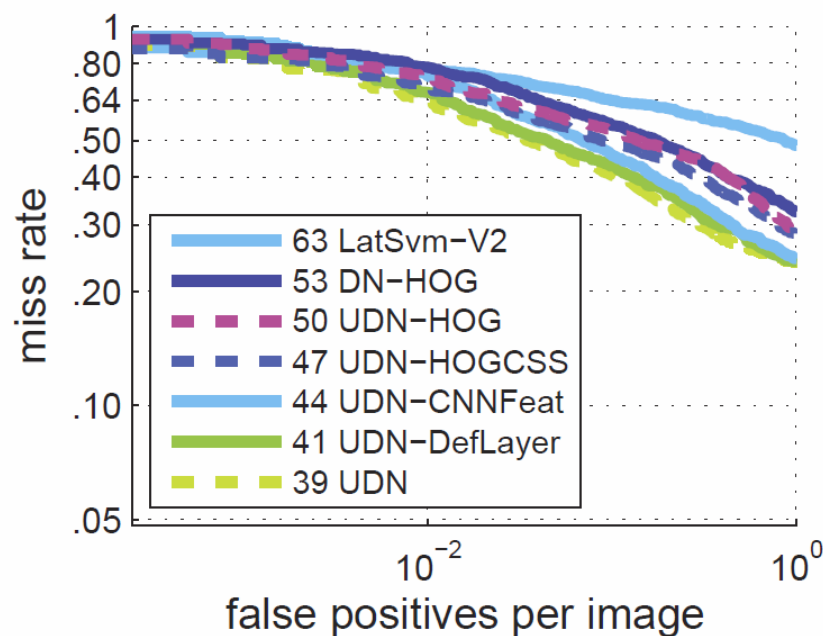
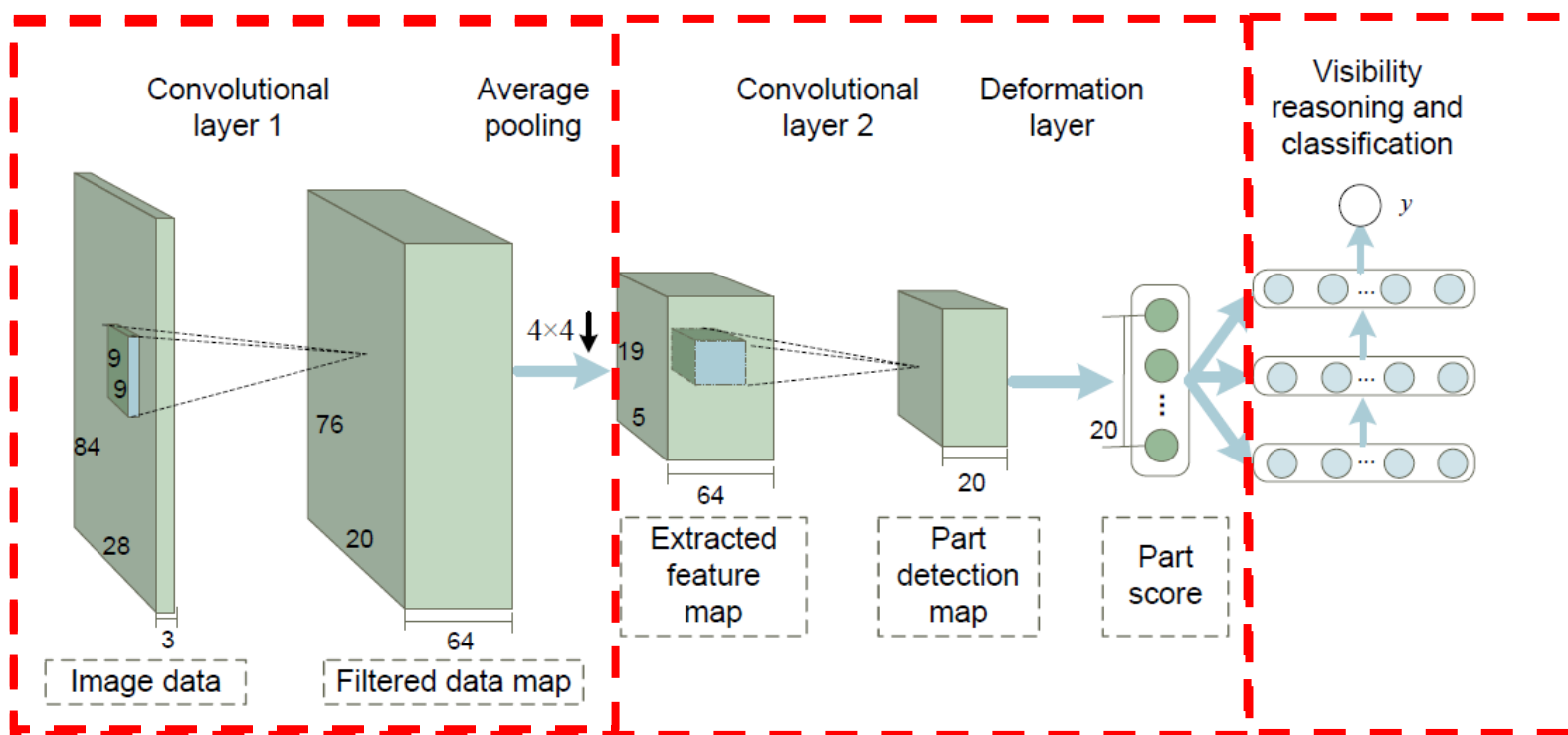


Results on Caltech Test



Results on ETHZ



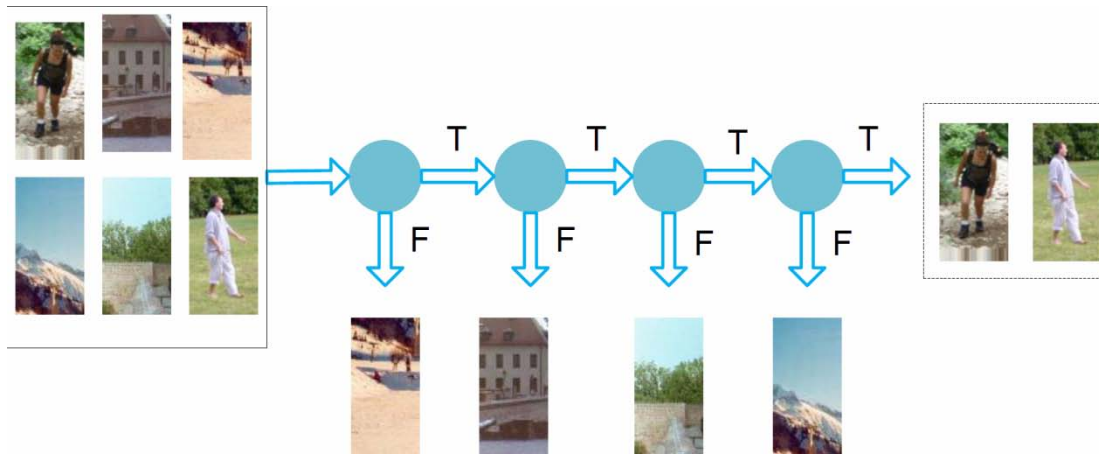


DN-HOG  
UDN-HOG  
UDN-HOGCSS  
UDN-CNNFeat  
UDN-DefLayer

# **Multi-Stage Contextual Deep Learning**

# Motivated by Cascaded Classifiers and Contextual Boost

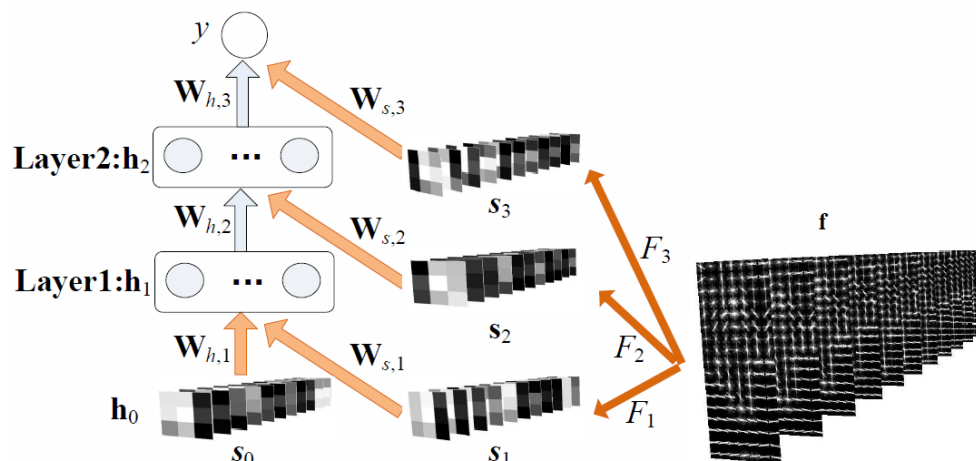
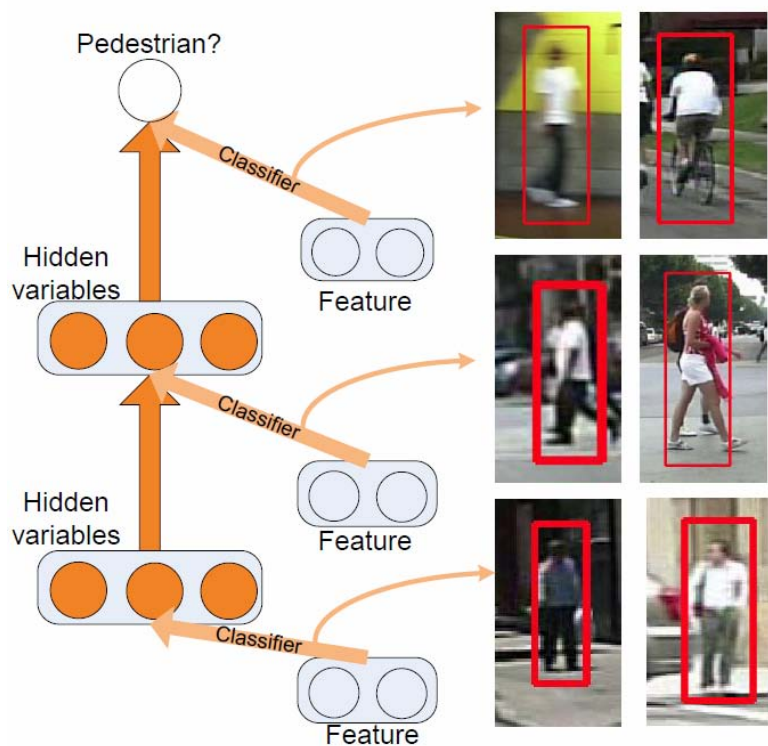
- The classifier of each stage deals with a specific set of samples
- The score map output by one classifier can serve as contextual information for the next classifier



- ❖ Only pass one detection score to the next stage
- ❖ Classifiers are trained sequentially

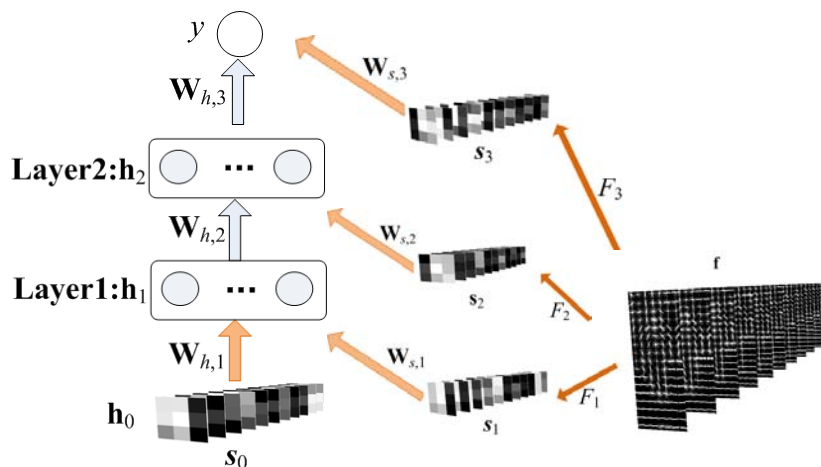
Conventional cascaded classifiers for detection

- Our deep model keeps the score map output by the current classifier and it serves as contextual information to support the decision at the next stage
- Cascaded classifiers are jointly optimized instead of being trained sequentially
- To avoid overfitting, a stage-wise pre-training scheme is proposed to regularize optimization
- Simulate the cascaded classifiers by mining hard samples to train the network stage-by-stage



# Training Strategies

- Unsupervised pre-train  $\mathbf{W}_{h,i+1}$  layer-by-layer, setting  $\mathbf{W}_{s,i+1} = 0$ ,  $\mathbf{F}_{i+1} = 0$
- Fine-tune all the  $\mathbf{W}_{h,i+1}$  with supervised BP
- Train  $\mathbf{F}_{i+1}$  and  $\mathbf{W}_{s,i+1}$  with BP stage-by-stage
- A correctly classified sample at the previous stage does not influence the update of parameters
- Stage-by-stage training can be considered as adding regularization constraints to parameters, i.e. some parameters are constrained to be zeros in the early training stages



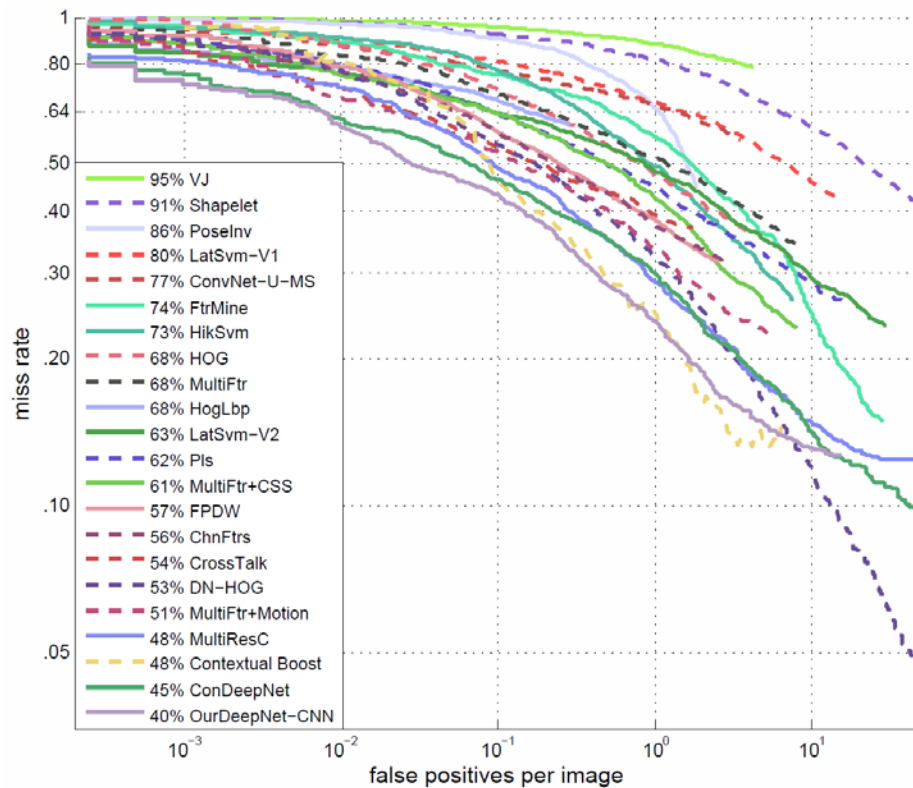
Log error function:

$$E = -l \log y - (1 - l) \log (1 - y)$$

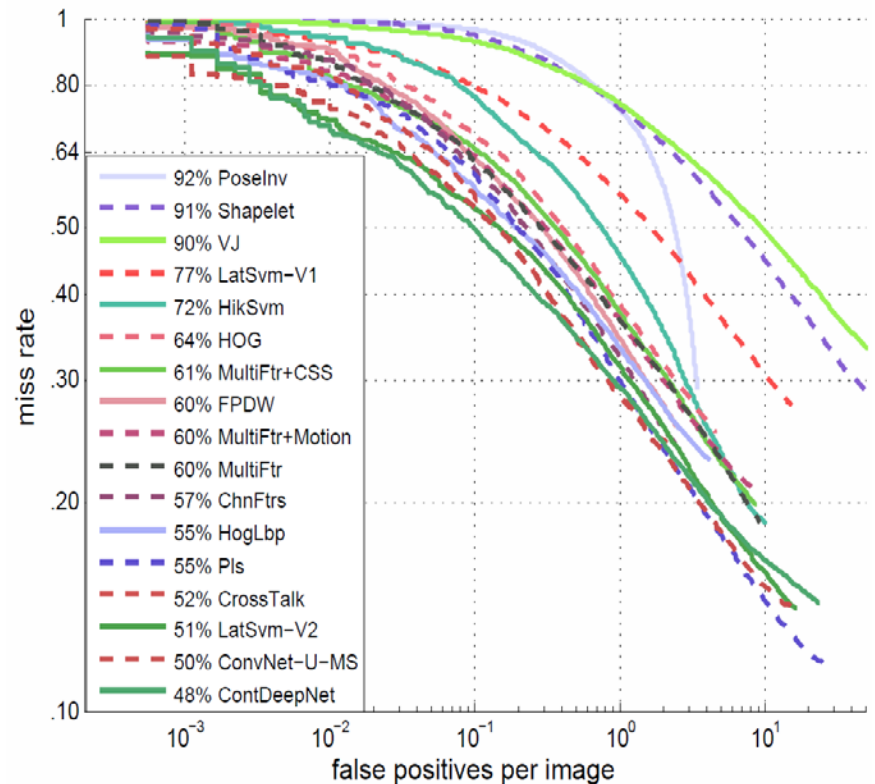
Gradients for updating parameters:

$$d\theta_{i,j} = -\frac{\partial E}{\partial \theta_{i,j}} = -\frac{\partial E}{\partial y} \frac{\partial y}{\partial \theta_{i,j}} = -(y - l) \frac{\partial y}{\partial \theta_{i,j}}$$

# Experimental Results

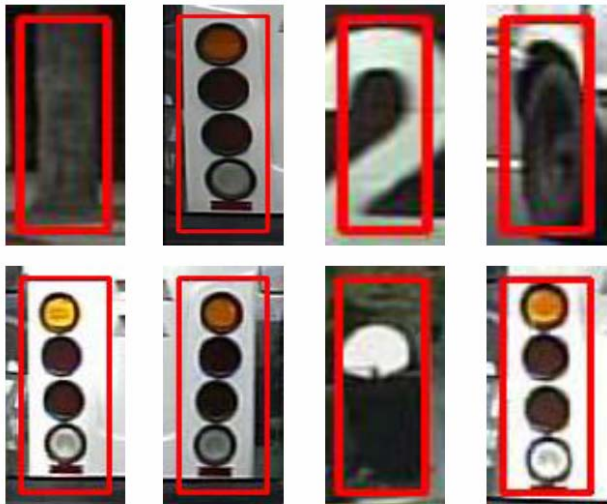


Caltech

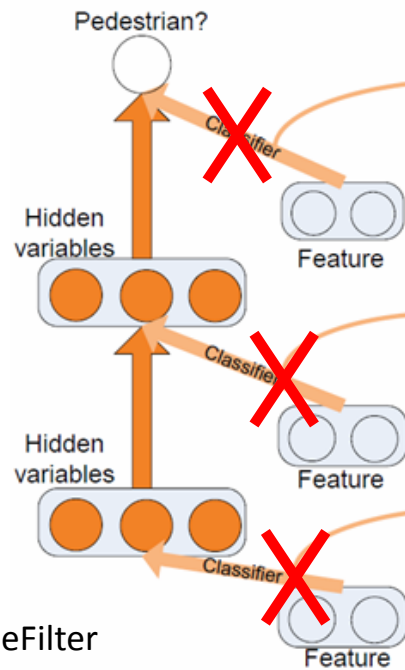
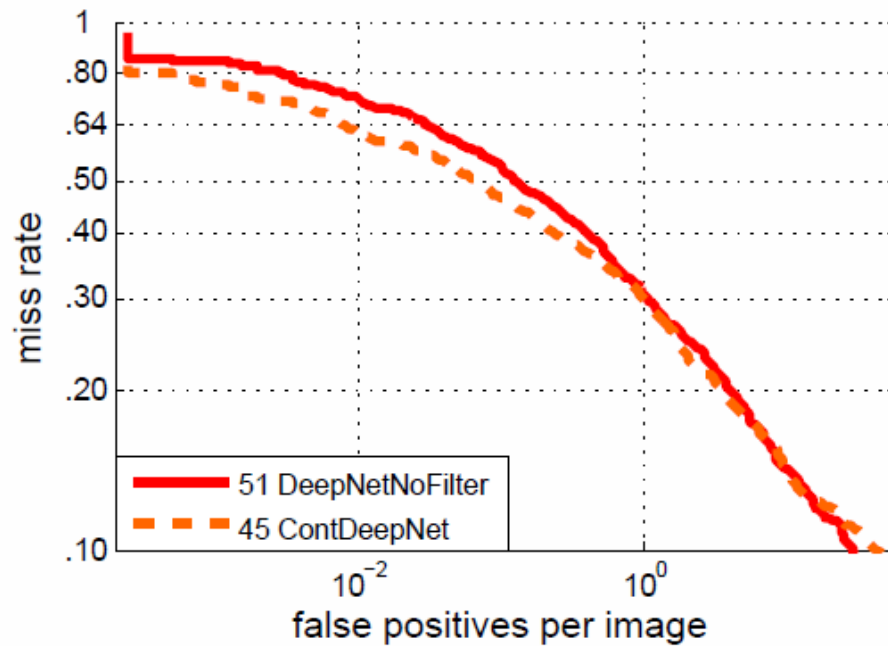


ETHZ

False positives of Net-NoneFilters



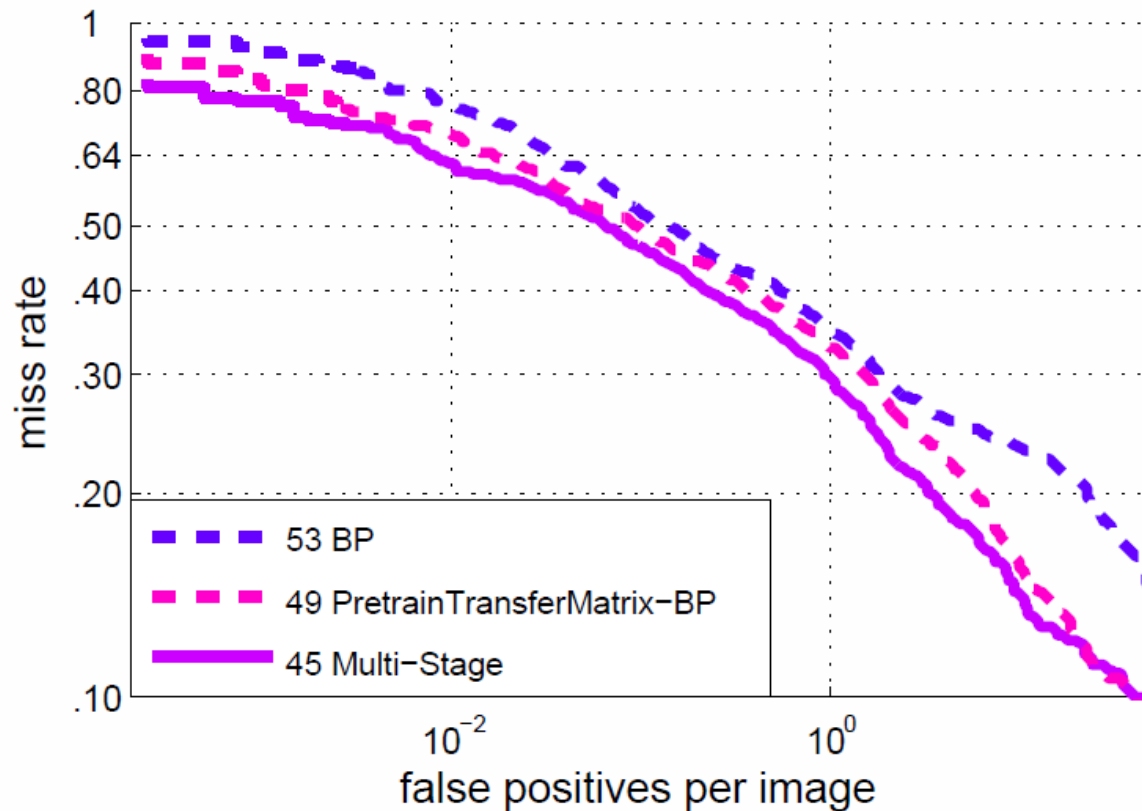
False negatives of Net-NoneFilters



DeepNetNoneFilter



# Comparison of Different Training Strategies

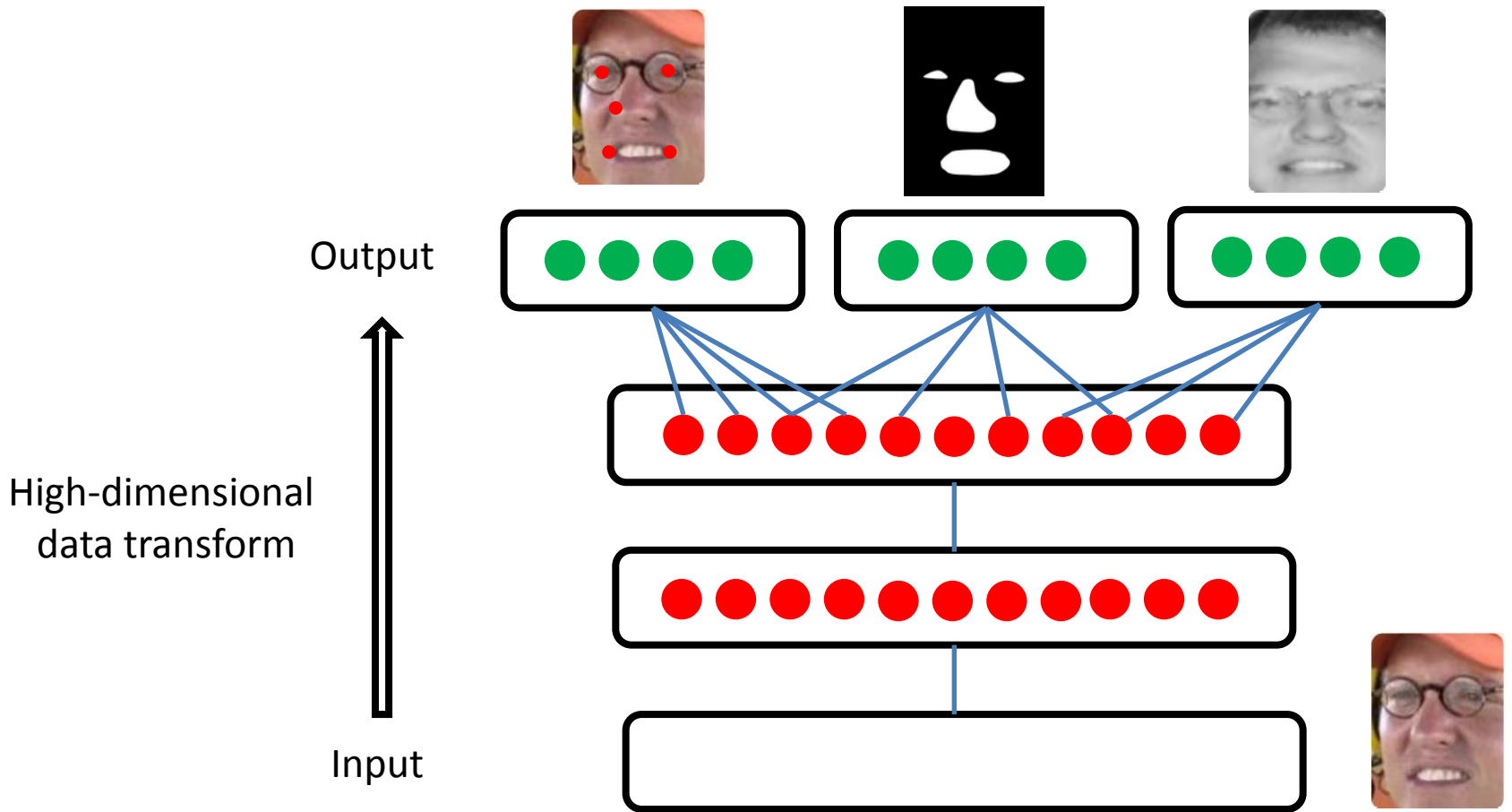


**Network-BP:** use back propagation to update all the parameters without pre-training

**PretrainTransferMatrix-BP:** the transfer matrices are unsupervised pretrained, and then all the parameters are fine-tuned

**Multi-stage:** our multi-stage training strategy

# High-Dimensional Data Transforms



**Facial keypoint detection:** face image -> facial keypoint

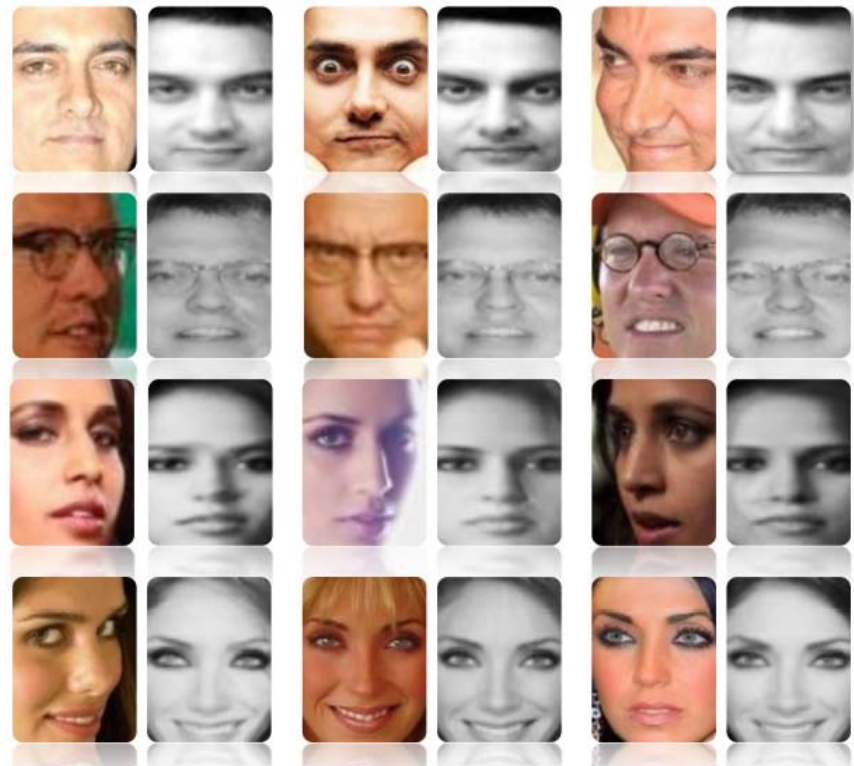
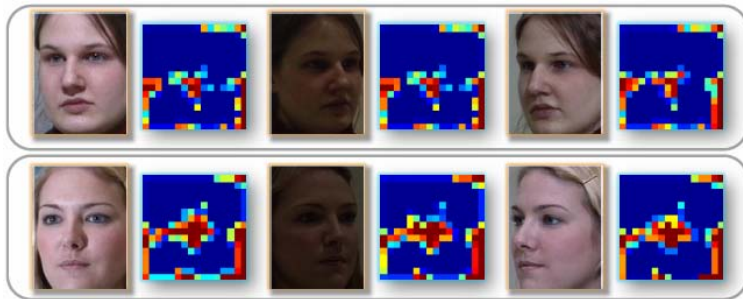
**Face transform:** face image in a arbitrary view -> face image in a canonical view

**Face parsing:** face image -> segmentation maps

**Pedestrian parsing :** pedestiran image -> segmentation maps

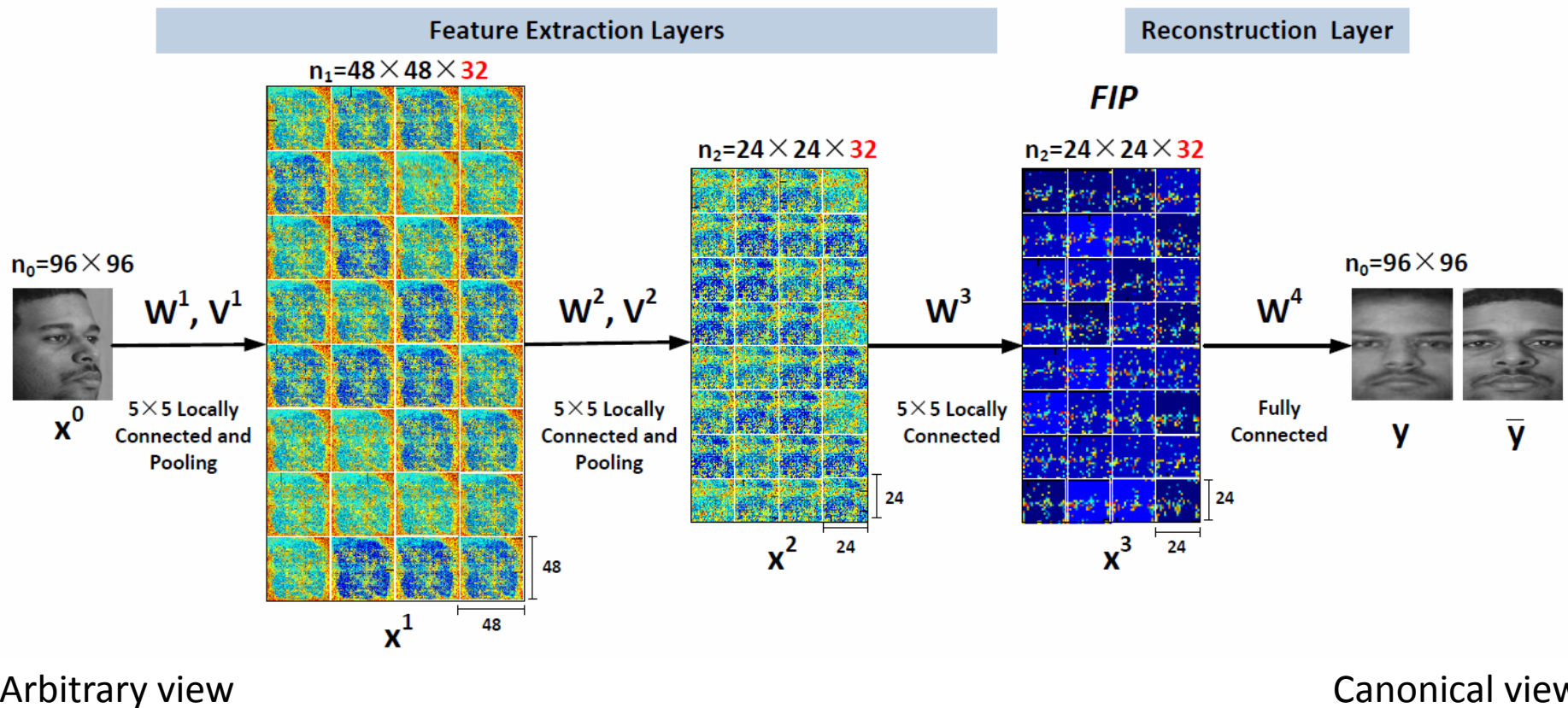
# Recovering Canonical-View Face Images

- Z. Zhu, P. Luo, X. Wang, and X. Tang, “Deep Learning Identity-Preserving Face Space,” ICCV 2013.



Reconstruction examples from LFW

- No 3D model; no prior information on pose and lighting condition
- Deep model can disentangle hidden factors through feature extraction over multiple layers
- Model multiple complex transforms
- Reconstructing the whole face is a much strong supervision than predicting 0/1 class label and helps to avoid overfitting



+45° +30° +15° -15° -30° -45°



+45° +30° +15° -15° -30° -45°



## Comparison on Multi-PIE

	-45°	-30°	-15°	+15°	+30°	+45°	Avg	Pose
LGBP [26]	37.7	62.5	77	83	59.2	36.1	59.3	√
VAAM [17]	74.1	91	95.7	95.7	89.5	74.8	86.9	√
FA-EGFC[3]	84.7	95	99.3	99	92.9	85.2	92.7	x
SA-EGFC[3]	93	<b>98.7</b>	99.7	<b>99.7</b>	<b>98.3</b>	93.6	97.2	√
LE[4] + LDA	86.9	95.5	99.9	<b>99.7</b>	95.5	81.8	93.2	x
CRBM[9] + LDA	80.3	90.5	94.9	96.4	88.3	89.8	87.6	x
Ours	<b>95.6</b>	<b>98.5</b>	<b>100.0</b>	<b>99.3</b>	<b>98.5</b>	<b>97.8</b>	<b>98.3</b>	x

- [3] A. Asthana, T. K. Marks, M. J. Jones, K. H. Tieu, and M. Rohith. Fully automatic pose-invariant face recognition via 3d pose normalization. In *ICCV*, pages 937–944, 2011. 1, 5, 6
- [4] Z. Cao, Q. Yin, X. Tang, and J. Sun. Face recognition with learning-based descriptor. In *CVPR*, pages 2707–2714, 2010. 2, 3, 6
- [9] G. B. Huang, H. Lee, and E. Learned-Miller. Learning hierarchical representations for face verification with convolutional deep belief networks. In *CVPR*, pages 2518–2525, 2012. 3, 6
- [17] S. Li, X. Liu, X. Chai, H. Zhang, S. Lao, and S. Shan. Morphable displacement field based image matching for face recognition across pose. In *ECCV*, pages 102–115, 2012. 1, 2, 5, 6
- [26] W. Zhang, S. Shan, W. Gao, X. Chen, and H. Zhang. Local gabor binary pattern histogram sequence (lgbphs): A novel non-statistical model for face representation and recognition. In *ICCV*, volume 1, pages 786–791, 2005. 5, 6



## Comparison on LFW (without outside training data)

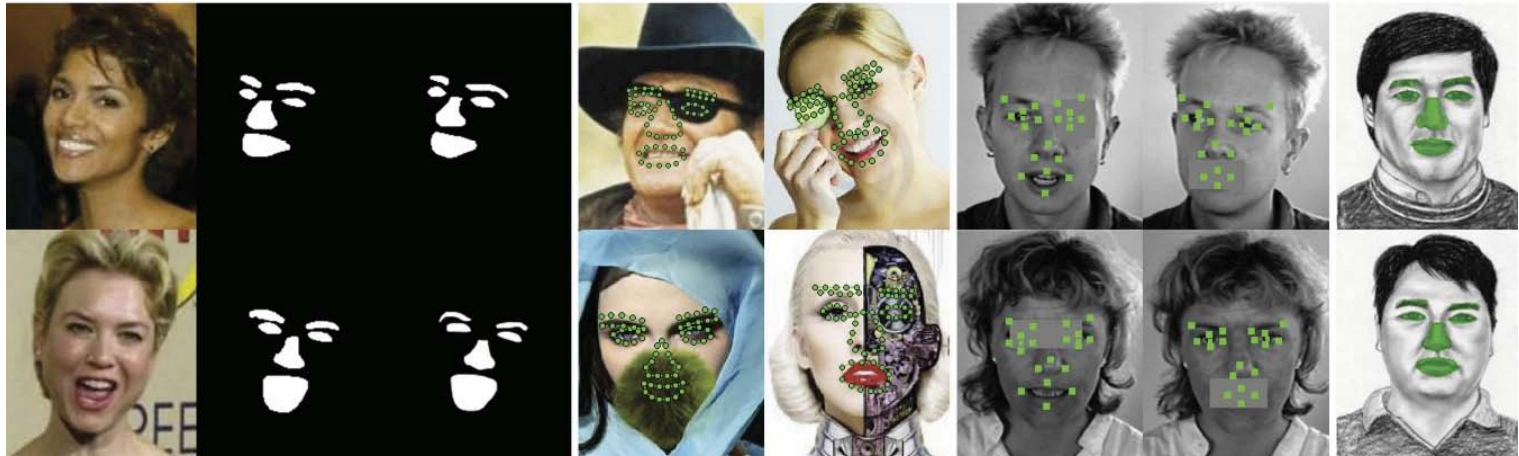
Methods	Accuracy (%)
PLDA (Li, TPAMI'12)	90.07
Joint Bayesian (Chen, ECCV'12, 5-point align)	90.9
Fisher Vector Faces (Barkan, ICCV'13)	93.30
High-dim LBP (Chen, CVPR'13, 27-point align)	93.18
<b>Ours</b> (5-point align)	<b>94.38</b>

## Comparison on LFW (with outside training data)

Methods	Accuracy (%)
Associate-Predict (Yin CVPR'12)	90.57
Joint Bayesian (Chen, ECCV'12, 5-point align)	92.4
Tom-vs-Peter (Berg, BMVC'12, 90-point align)	93.30
High-dim LBP (Chen, CVPR'13, 27-point align)	95.17
Transfer learning joint Bayesian (Cao, ICCV'13, 27-point align)	96.33
<b>Ours</b> (5-point align)	<b>96.45</b>

# Face Parsing

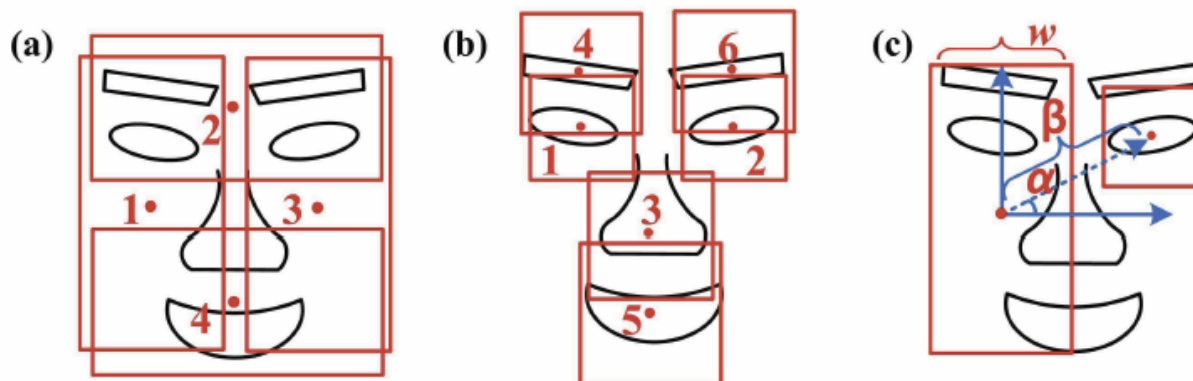
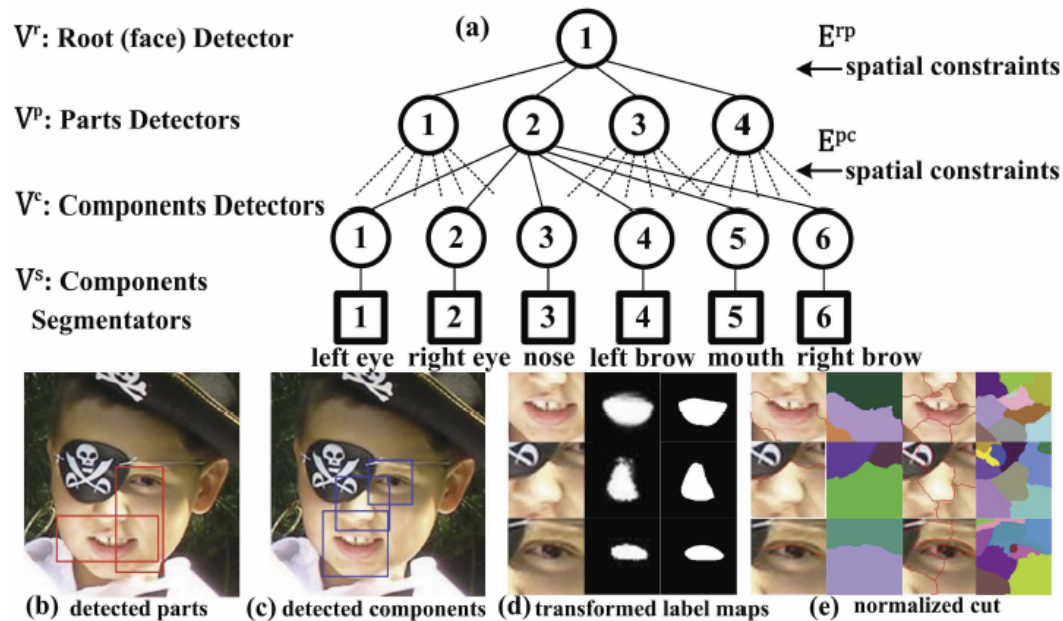
- P. Luo, X. Wang and X. Tang, “Hierarchical Face Parsing via Deep Learning,” CVPR 2012



# Motivations

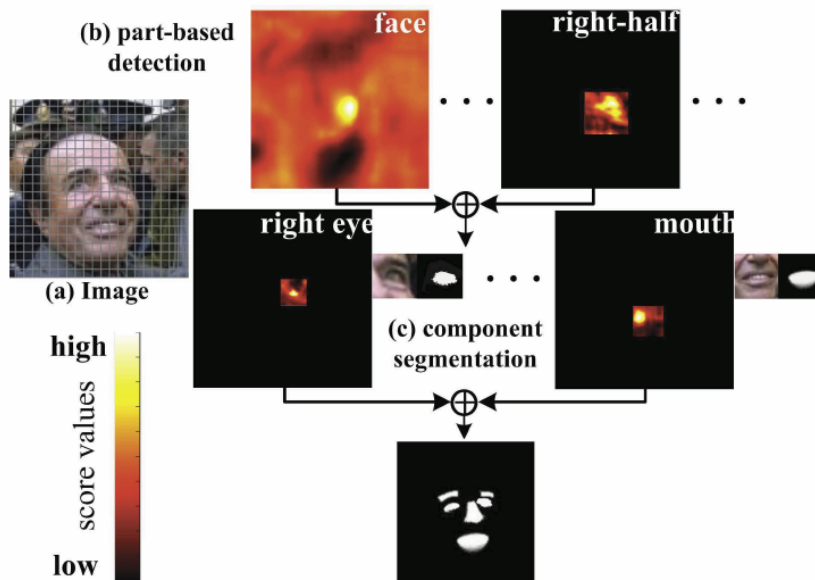
- Recast face segmentation as a cross-modality data transformation problem
- Cross modality autoencoder
- Data of two different modalities share the same representations in the deep model
- Deep models can be used to learn shape priors for segmentation

# Hierarchical Representation of Face Parsing

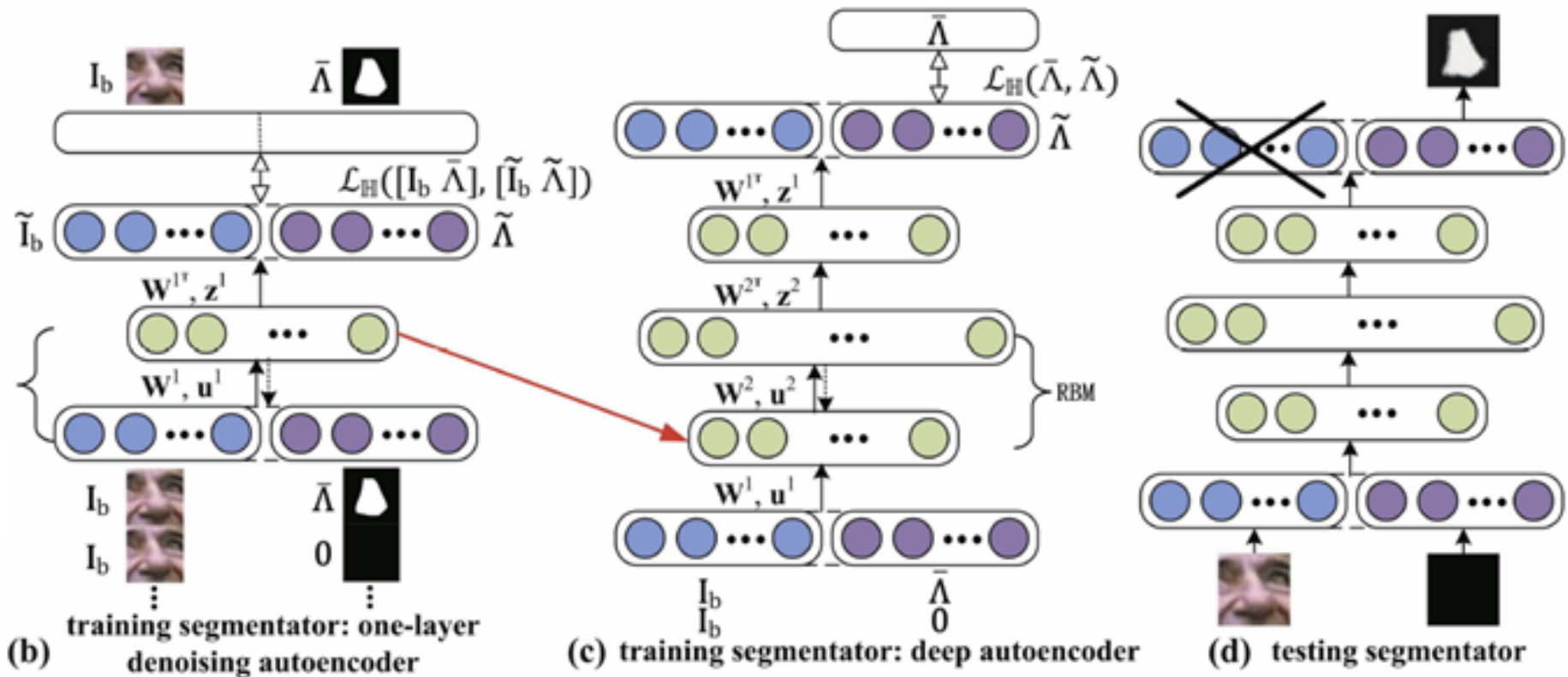


# Joint Bayesian Formulation

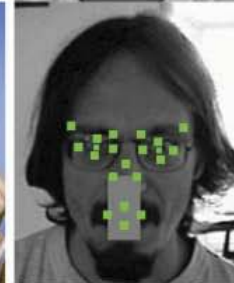
- Detectors are trained with deep belief net (DBN) and segmentators are trained with deep autoencoder. Both have are generative models.
- Joint Bayesian framework for face detection, part detection, component detection, and component segmentation



# Training Segmentators

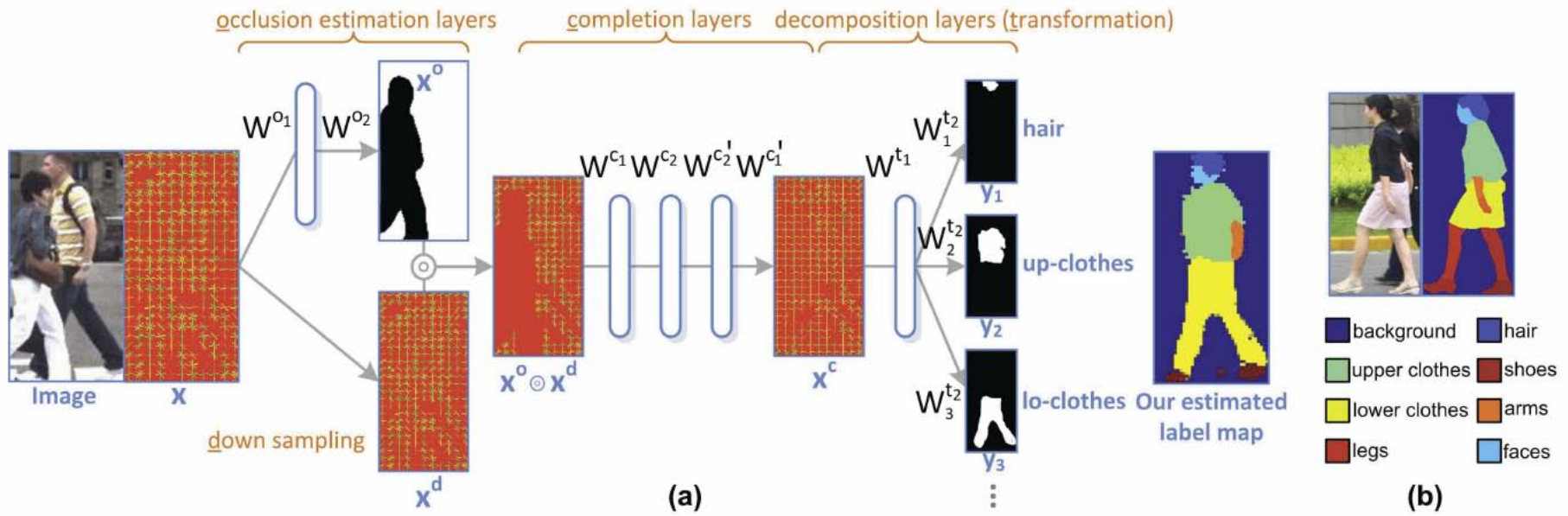




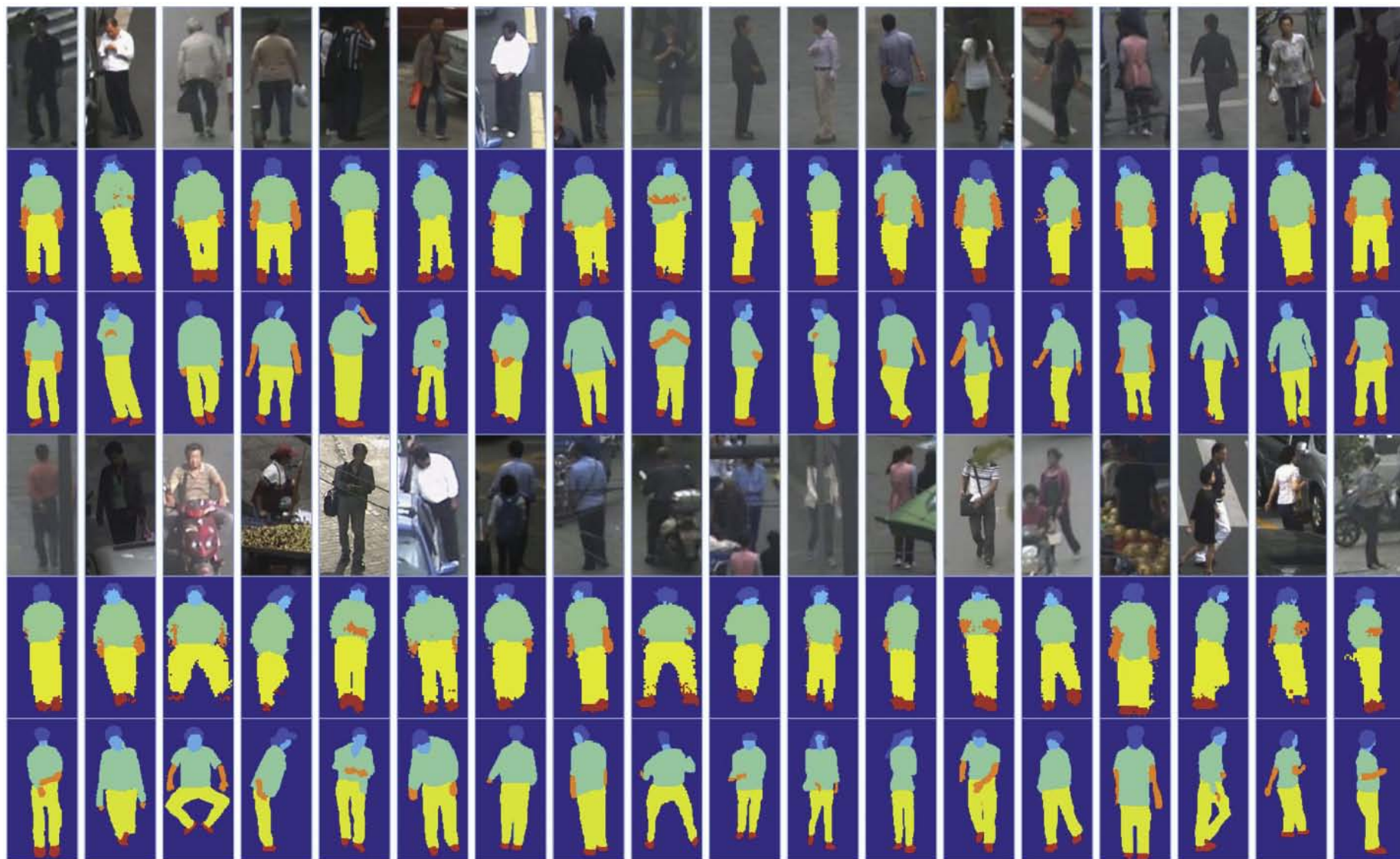


# Human Parsing

- P. Luo, X. Wang, and X. Tang, "Pedestrian Parsing via Deep Decompositional Network," ICCV 2013





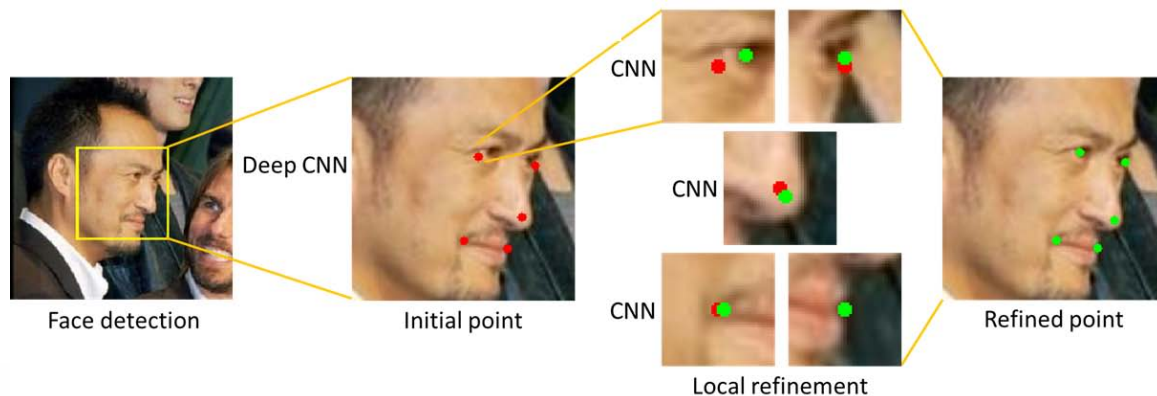
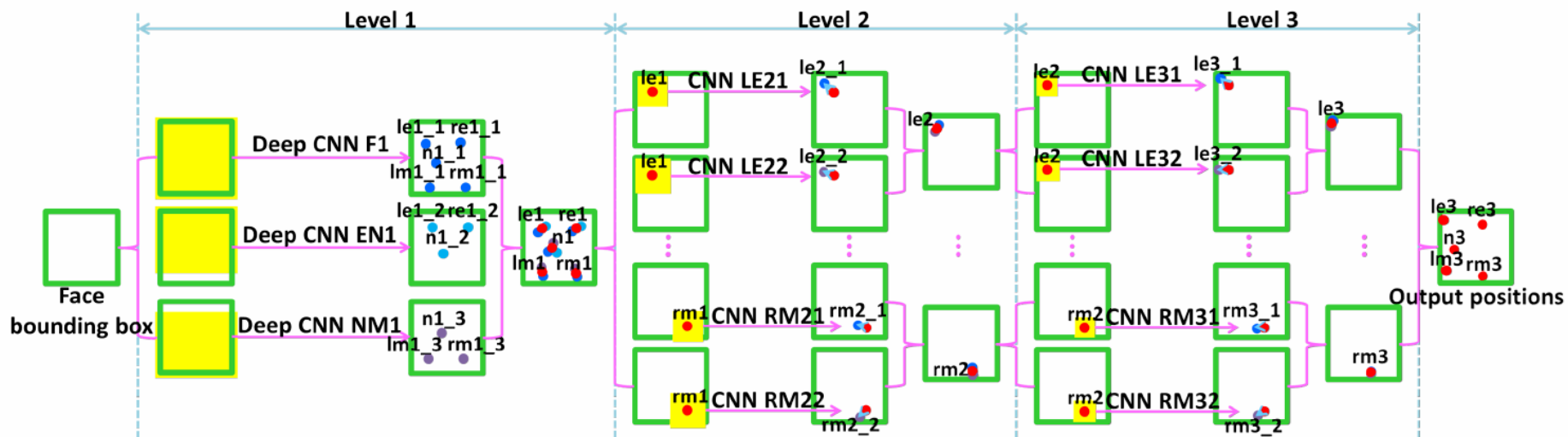


Second row: our result  
Third row: ground truth

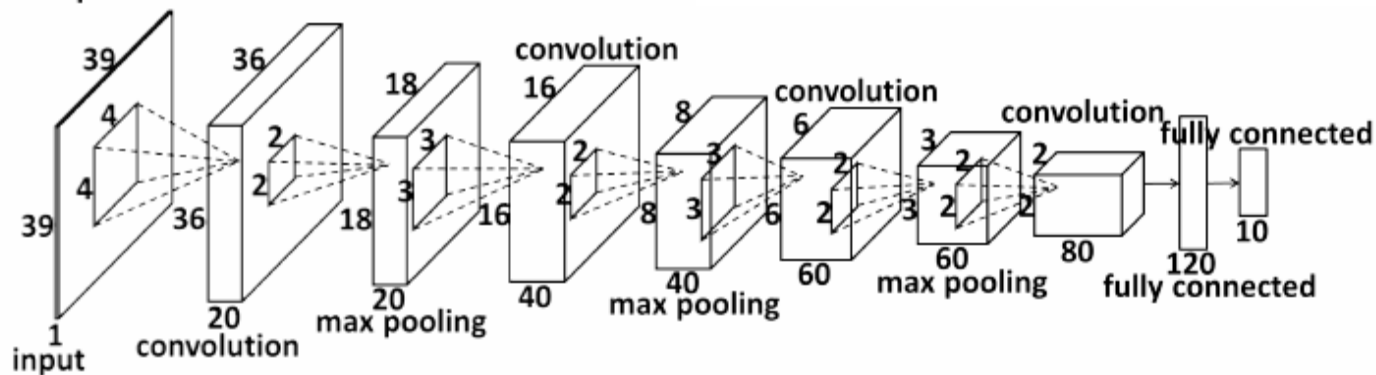
# Facial Keypoint Detection

- Y. Sun, X. Wang and X. Tang, “Deep Convolutional Network Cascade for Facial Point Detection,” CVPR 2013





Deep CNN F1



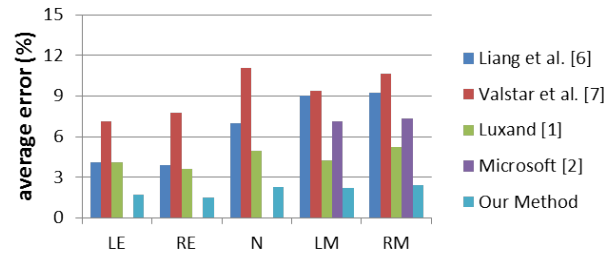
# Benefits of Using Deep Model

- Take the full face as input to make full use of texture context information over the entire face to locate each keypoint
- The first network of tacking the whole face as input needs **deep** structures to extract **high-level** features
- Since the networks are trained to predict all the keypoints simultaneously, the geometric constraints among keypoints are implicitly encoded

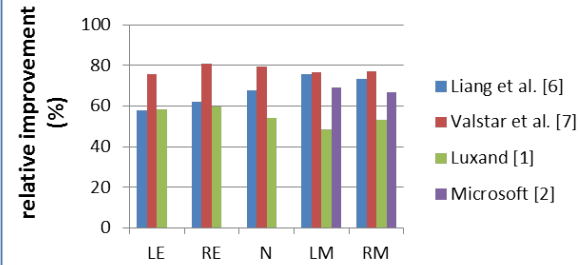
Comparison with Liang et al. [6], Valstar et al. [7], Luxand Face SDK [1] and Microsoft Research Face SDK [2] on BioID and LFPW.

$$\text{Relative improvement} = \frac{\text{reduced average error}}{\text{average error of the method in comparison}} \cdot$$

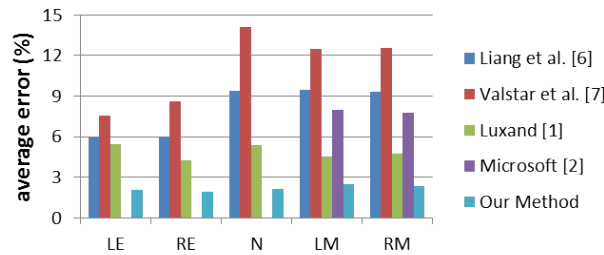
**Average errors on BioID**



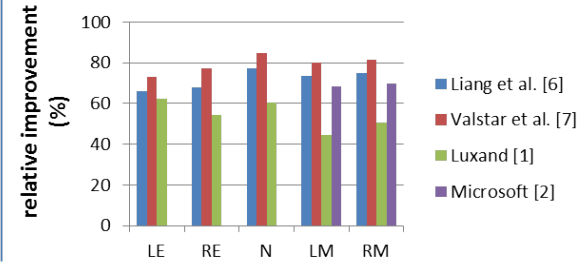
**Accuracy improvements on BioID**



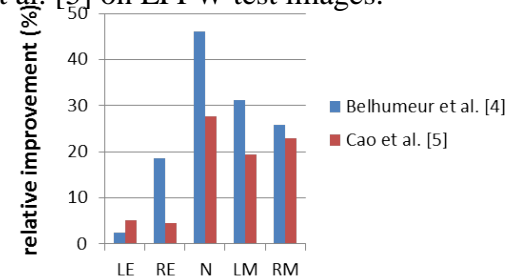
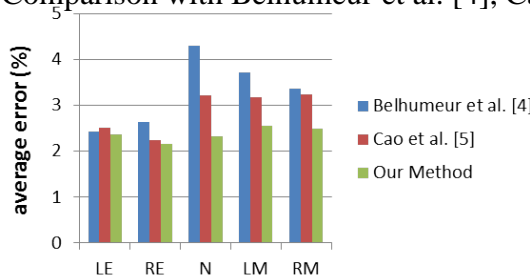
**Average errors on LFPW**



**Accuracy improvements on LFPW**



Comparison with Belhumeur et al. [4], Cao et al. [5] on LFPW test images.



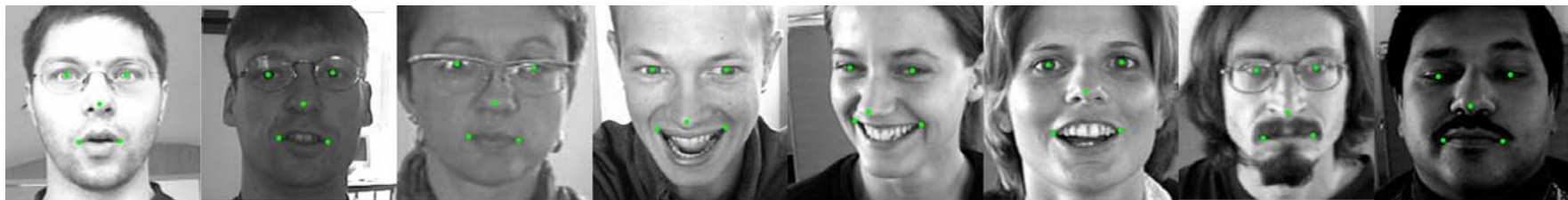
1. <http://www.luxand.com/facesdk/>
2. <http://research.microsoft.com/en-us/projects/facesdk/>
3. O. Jesorsky, K. J. Kirchberg, and R. Frischholz. Robust face detection using the hausdorff distance. In Proc. AVBPA, 2001.
4. P. N. Belhumeur, D. W. Jacobs, D. J. Kriegman, and N. Kumar. Localizing parts of faces using a consensus of exemplars. In Proc. CVPR, 2011.
5. X. Cao, Y. Wei, F. Wen, and J. Sun. Face alignment by explicit shape regression. In Proc. CVPR, 2012.
6. L. Liang, R. Xiao, F. Wen, and J. Sun. Face alignment via component-based discriminative search. In Proc. ECCV, 2008.
7. M. Valstar, B. Martinez, X. Binefa, and M. Pantic. Facial point detection using boosted regression and graph models. In Proc. CVPR, 2010.



Validation.



BioID.



LFPW.



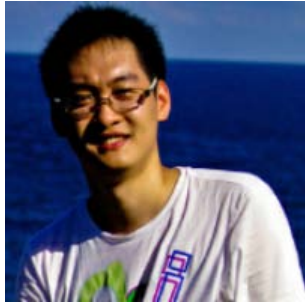
# Conclusions

- Deep learning can jointly optimize key components in vision systems
- Prior knowledge from vision research is valuable for developing deep models and training strategies
- Deep learning can solve some vision challenges as problems of high-dimensional data transform
- Challenging prediction tasks can make better use the large learning capacity and avoid overfitting

# People working on deep learning in our group



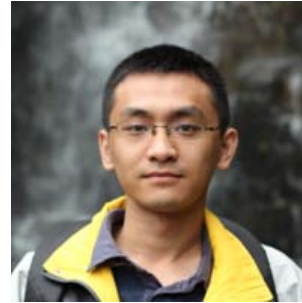
Wanli Ouyang



Ping Luo



Yi Sun



Xingyu Zeng



Zhenyao Zhu

## Acknowledgement

Hong Kong Research Grants Council

中国自然科学基金



# Thank you!

